

SEMINAR - YOUTH WORKER



TYMA : TRAINING YOUNG MEDITERRANEAN ACTORS

Marseille, France
22 - 28 november 2024



Co-funded by
the European Union

WELCOME !

TYMA seminar will bring together about **10 countries** from the two shores of the **Mediterranean area**. The seminar is an **opportunity for active youth workers and structural organizations** found in the Arab and European region to meet and exchange diverse technical and strategic expertise on intercooperational project design, while exploring possibilities for **potential partnership solidarity projects**. It will thus enable sustainable cooperation between Mediterranean structures on an international scale.

This project aims to **build a Euro-Mediterranean Network for youth workers**, to improve the quality of inter-cooperational projects between European and Southern Mediterranean partner countries. TYMA encourages capacity-building among young people using a range of non-formal education tools, while supporting the implementation of their project proposals.



Co-funded by
the European Union

TABLE OF CONTENT

Partners

4

Venue

5

Airport information

7

Program

15

Refund

16

Contact

17



Co-funded by
the European Union

PARTNERS

BOKRA SAWA

Bokra Sawa, (meaning “Tomorrow Together” in Arabic) is based in Marseille, and works in the field of **intercultural and non-formal education**. It brings together Euro-Mediterranean youth to promote shared values and experiences. The organization focuses on addressing the needs of young people around the Mediterranean, equipping them with tools to advocate for their causes, and fostering dialogue on diversity, inclusion, accessibility, and freedom of movement. It **supports youth initiatives and amplifies their voices to create a balanced, active dynamic around the Mediterranean shores**, exploring their potential contributions to shared decision-making.

Many organizations will take part in the seminar from all over the Mediterranean region: **Tunisia, Algeria, Morocco, Italy, Belgium, Spain, Greece, Lebanon, Poland, Egypt, Croatia, Portugal, and Romania** will be **represented by young workers and their projects**. If you're curious about the workers and the partners involved you can get more insights by looking at the brochure that will be sent to you.



Co-funded by
the European Union

ABOUT THE VENUE

From the 22 to the 28 november 2024

- Arrival day : **friday 22 november**
- Departure day : **thursday 28 november**
- Activities' starting day : **saturday 23 november**
- Last day of activities : **wednesday 27 november**

November						
Su	Mo	Tu	We	Th	Fr	Sa
					1	2
3	4	5	6	7	8	9
10	11	12	13	14	15	16
17	18	19	20	21		
					29	30

ABOUT THE VENUE

Hôtel Ibis Budget Marseille Vieux Port
46 rue sainte, 13001 Marseille

Each 2-3 people will share a room that includes 2-3 beds. In the rooms there are bathrooms with cold and hot water.

MEALS

- * Breakfast will be provided by Bokra Sawa every morning, you will get to meet the other participants during several small breakfast-meetings and start the day together.
- * The meals will be **adapted to your allergies/ special dietary** needs, according to what is specified in your application form that you submitted (You can send us also by email if you have any inquiries)



AIRPORT INFORMATION

When you arrive at Marseille-Provence Airport, you will need to reach **Marseille Gare Saint Charles** (central station) to join the city of Marseille.

How to get from Marseille-Provence Airport to Marseille Gare Saint Charles ?

The association will not be able to pick you up at the airport. The closest airport to Marseille is the Marseille-Provence airport (MRS). It is directly connected to the central train station and metro St Charles, by an **airport shuttle bus**.



Each 15 minutes there is a shuttle bus which gets at the train station in 25 minutes.

AIRPORT INFORMATION

This fare applies to all Marseille airport shuttles. Make sure you select **FROM Aéroport Marseille Provence TO Marseille Centre St Charles** with the date of your arrival.

Easily access Marseille Provence Airport by direct shuttle bus

Departure location * Place of arrival * One way ticket Round trip

Go date *

To facilitate your route you can buy it online here: [Bus - Aéroport de Marseille Provence](#)



PRICE

Older than 25 :
single ticket €10
round trip ticket €16

12 to 25 yeras old (both included) :
single ticket €7 round triple €14

ABOUT THE REFUND




Please take care to keep **ALL** your
invoices and tickets for your transport.
Included the boarding passes!



BUS TIMETABLE

FROM THE AIRPORT TO MARSEILLE (GARE ST CHARLES):

FROM MARSEILLE (GARE ST CHARLES) TO THE AIRPORT:

lecar+  **91**

**Aéroport Marseille
Provence** — **Marseille**

JOURS DE FONCTIONNEMENT
TOUS LES JOURS Y COMPRIS LES JOURS FÉRIÉS

04:05
04:25*
04:40

DÉPART TOUTES LES 20 MINUTES DE 5:00 À 7:00
DÉPART TOUTES LES 10 MINUTES DE 7:00 À 20:00
DÉPART TOUTES LES 20 MINUTES DE 20:00 À 1:40

01:50*

*Ces départs circulent de mai à octobre

Attention : de 1h à 4h30, l'accès à la gare routière se fait par les escaliers de la place V. Hugo (côté Université)



lecar+  **91**

Marseille — **Aéroport
Marseille Provence**

JOURS DE FONCTIONNEMENT
TOUS LES JOURS Y COMPRIS LES JOURS FÉRIÉS

03:30
03:45*

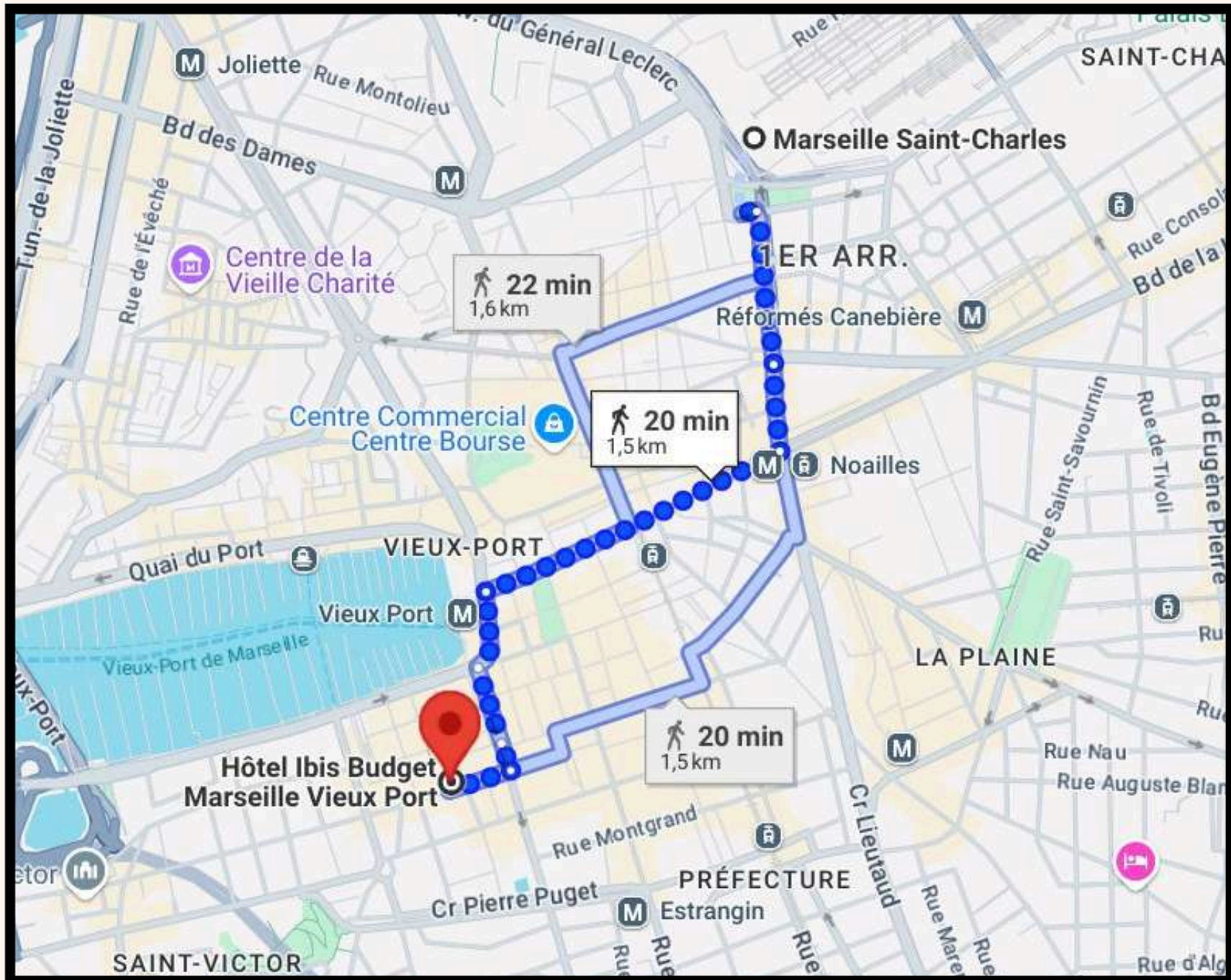
DÉPART TOUTES LES 20 MINUTES DE 4:00 À 7:00
DÉPART TOUTES LES 10 MINUTES DE 7:00 À 20:00
DÉPART TOUTES LES 20 MINUTES DE 20:00 À 1:00

01:15*

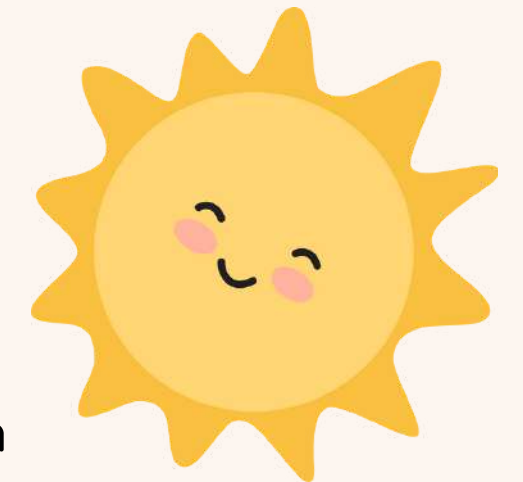
*Ces départs circulent de mai à octobre

Attention : de 1h à 4h30, l'accès à la gare routière se fait par les escaliers de la place V. Hugo (côté Université)

FROM THE TRAIN STATION TO THE HOTEL



**Hotel Ibis Budget Marseille Vieux
Port : 46 rue sainte 13001
Marseille**



Bokra Sawa's team will not pick you up in the Station and do not pay your ticket.

TRANSPORT IN MARSEILLE

To get around to Marseille, you can take the **bus**, the **tramway** and/or the **Metro**. The buses are different depending on the neighborhood, on each bus is indicated their number and the name of the terminus station and inside there is a GPS system that announces the name of each station. Your local transportation and the transportation inherent to the activities will be paid. There is also a **RTM application available on smartphones**, to know the bus, shuttle, metro and tram transit times.

For the subway, there are two lines : **M1 blue : la Fourragère - la Rose** / **M2 red : Mte. Marguerite Dromel - Géze**
The one way ticket costs 1,70€ (+ 0,10€ for the rechargeable ticket).

You can buy your tickets in all the metros and tramway stations with your **credit card or cash**. In the city bus you must pay with cash, and the single ticket costs 2€. You can pay directly by card on the terminal (credit card will act as a ticket).

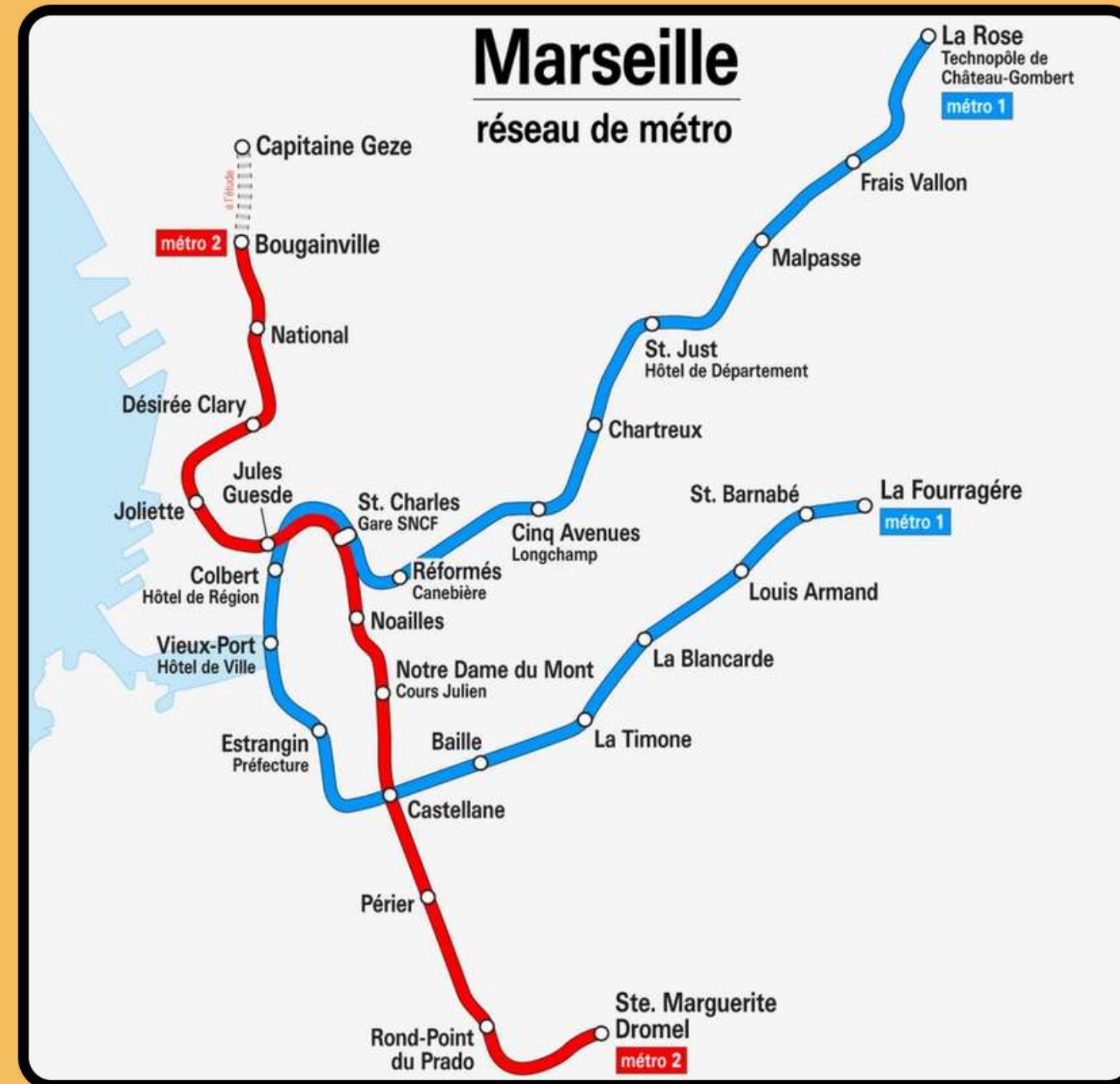


Co-funded by
the European Union

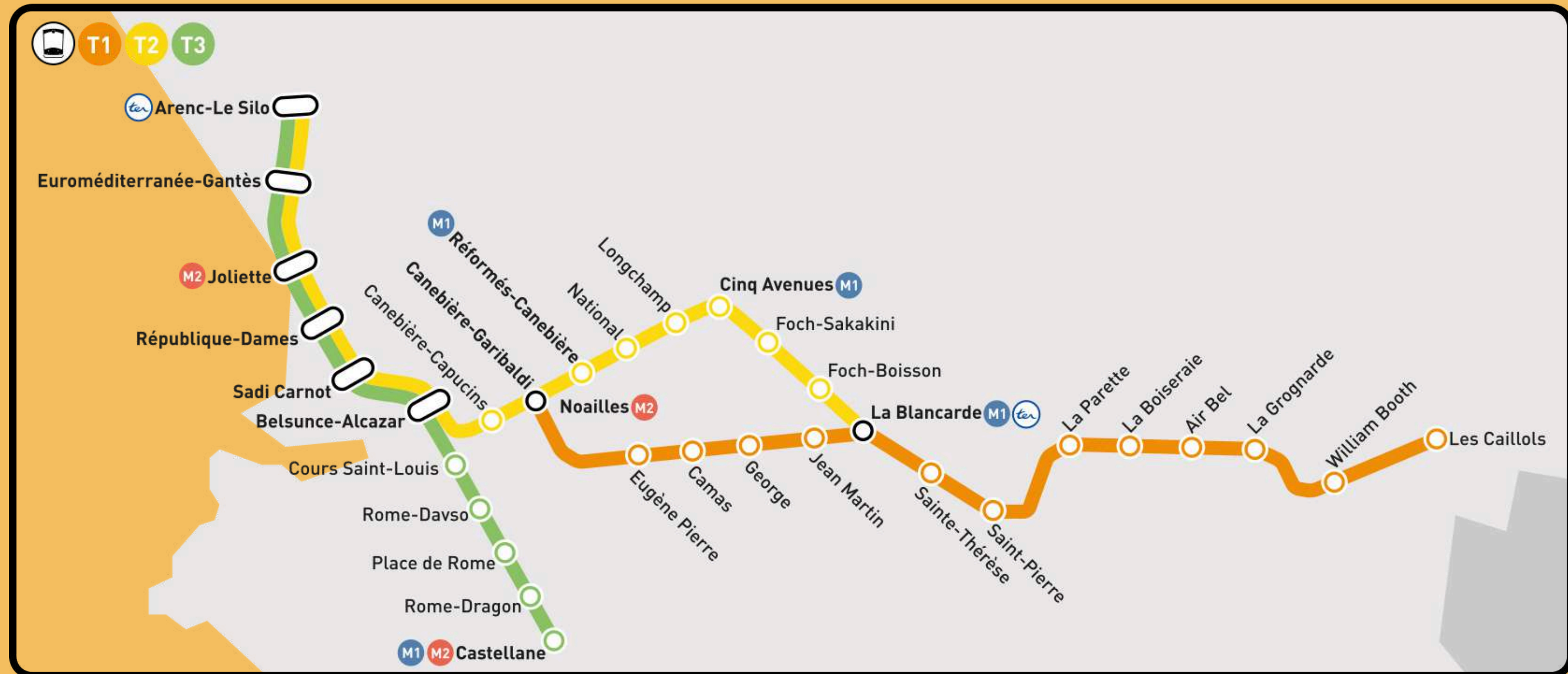
METRO STATION

Here is a map of the Marseille metro lines.

“St.Charles” is the central station and “Vieux-Port” is the place of the venue.



TRAMWAY STATION





JOIN NOW

<https://www.tavo.europa.eu/youth-exchanges/tyma/>

FOR MORE PROJECTS

Explore the world and learn together with the help of Tavo Europa. Join the group with more opportunities: <https://www.facebook.com/groups/186132221744993>

THE LEARNING PASS 2024

You are welcome to join our new educational programme for 2024! Dive into non-formal learning exploration for a 50 euro fee that will unlock your potential to join all training courses, professional study visits, events in Lithuania and abroad until the end of the year! Please do not pay any fee until you receive a confirmation letter to join the programme. If you want to join the project, please fill the application form, whether you have already participated or not. Bear in mind that Tavo Europa keeps the right to send most suitable and motivated participants to all of our projects.



Co-funded by
the European Union