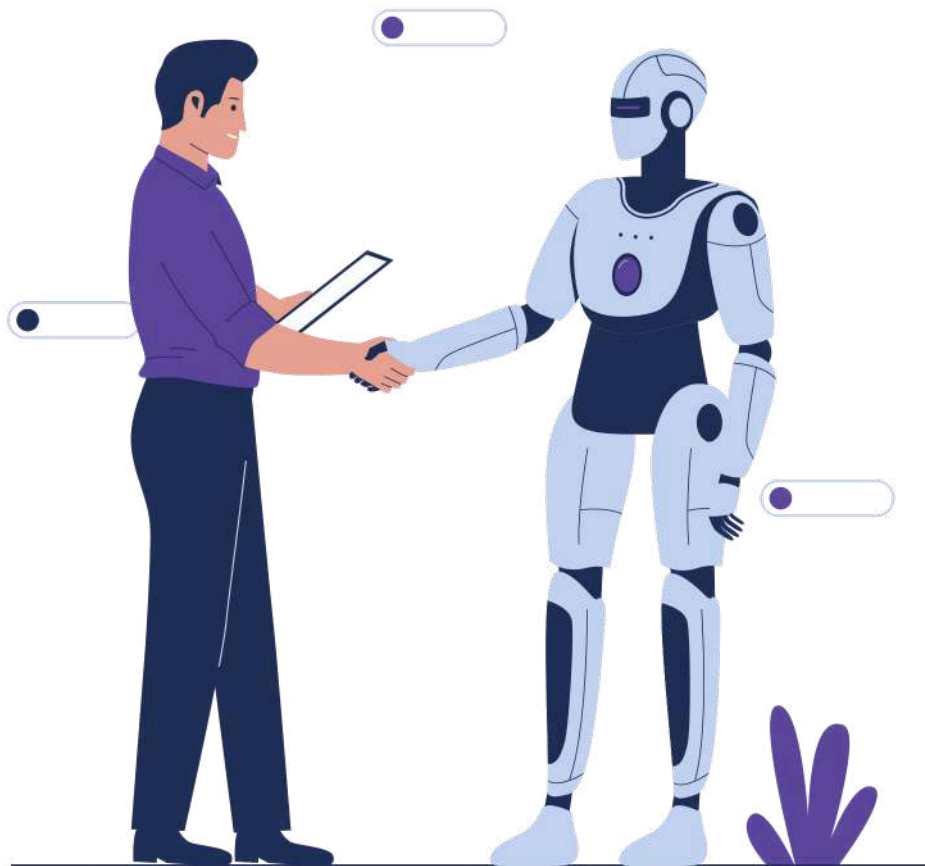




Using AI in youth work and as a learning resource



Strasbourg, France
22 – 31 July 2025



**Co-funded by
the European Union**

Erasmus+
Enriching lives, opening minds.

Funded by the European Union. The views and opinions expressed are those of the author alone and do not necessarily reflect those of the European Union or the European Education and Culture Executive Agency (EACEA). Neither the European Union nor the granting authority can be held responsible.

Introduction

Thanks to the European Commission's Erasmus+ programme, AMSED is delighted to welcome you to our seminar on The use of AI in youth work and as a learning resource. During this seminar, you will meet many people from all backgrounds and cultures. You will be able to discuss AI and its impact on youth work, a subject that is currently a central topic. Through a variety of non-formal education activities, you will develop a range of professional and personal skills that you can use in your local context. AI is changing our relationship to everything and the speed of learning. Hence, it is important to keep up to date to its rapid change. So we want you to be motivated, ready to share your ideas and best practices and to interact with others on these topics.

This infopack contains all the information you need to prepare for the seminar.

We look forward to seeing you in Strasbourg for this seminar!

The Director of AMSED

Djilali KABECHE



Please read the following document carefully and contact us if you have any questions:

nadege.amsed@gmail.com

contact@amsed.fr

Please sign and return this infopack to us before April 4th.

Before purchasing your tickets, please confirm your travel option with us.

You have until **April 15th** to send us your transport proposal.

If you have any questions, please contact nadege.amsed@gmail.com

In case of emergency during the seminar or on the way there or back, please contact Djilali KABECHE on his mobile phone on +33 (0)6.61.34.26.03 or by email at contact@amsed.fr

Artificial intelligence

Artificial intelligence (AI) has become a central technology in modern society, impacting professional fields, daily life, and education. While AI has existed for decades, its recent advancements and accessibility have led to its widespread use, especially among young people. In March 2024, the 40 leading AI tools recorded nearly 3 billion monthly visits, with ChatGPT alone having over 500 million users globally. In France, 86% of young people (aged 18-25) use at least one generative AI service, and 75% use it weekly. This widespread adoption challenges traditional education models, non-formal learning, and social media usage. AI's influence on youth work is significant, as young people increasingly rely on AI for learning and problem-solving. However, there is a growing concern about the lack of education on responsible AI use. Recognizing this, youth organizations, educators, and policymakers are taking steps to guide AI use in education and youth work, such as developing educational support manuals. This project aims to bridge the knowledge gap by equipping youth workers and young people with the necessary skills to understand and use AI responsibly.

The project

The project, initiated by AMSED and its partners, aims to strengthen key and transversal competencies (knowledge, soft skills, and practical skills) for over 40 young people, youth workers, NEETs, and individuals from disadvantaged backgrounds. The initiative provides training on AI usage, enabling participants to understand and apply AI responsibly in youth work and as a learning resource.

This project is developed in response to two key observations:

- The increasing use of AI in everyday life, particularly among young people.
- The lack of education on AI usage and its ethical implications.

The seminar takes place within a broader context where AI is emerging as a key technology of the future. It aligns with European and international discussions on AI development and regulation, covering ethics, human rights, innovation, and responsible AI usage. The project fosters a deeper understanding of AI, its opportunities, and challenges, ensuring that youth workers can guide young people in ethical AI use.

Profile of participants

As part of this seminar, we are looking for participants:

- Over 18 years old;
- Involved at local level or wishing to get involved;
- Interested in Artificial Intelligence learning and youth inclusion;
- Wishing to be actively involved in all stages of the project (upstream, during, dissemination);
- Newcomers in Erasmus+ programmes;
- Motivated to work on developing their personal and professional skills;
- Willing to disseminate the new knowledge, skills and ideas discussed during the seminar;
- Ready to work in an intercultural environment.

Specific objectives

The seminar is structured around the following objectives:

- 📌 **Raise awareness and train participants on AI fundamentals**, including machine learning, deep learning, generative AI, weak AI, strong AI, and its applications in professional and personal settings.
- 📌 **Encourage the exchange of experiences and best practices** between youth workers and AI experts to develop inclusive digital learning solutions and enhance youth work.
- 📌 **Create synergies among various stakeholders** (youth, NGOs, public institutions, businesses, media) to identify and promote ethical AI initiatives in youth work and education.
- 📌 **Develop pedagogical tools and practical resources**, such as case studies, guides, and educational activities, to promote responsible digital learning and citizenship among young people and support youth workers.
- 📌 **Promote European programs like Erasmus+**, highlighting opportunities for mobility, funding, and learning in AI and digital transformation.

This project aligns with Erasmus+ priorities by supporting non-formal education, digital transformation, and the inclusion of disadvantaged youth. Through this initiative, participants gain concrete and transferable skills to enhance their work in youth development and support digital learning, particularly for young people with fewer opportunities.

Interaction and methods used

- → Non-formal education
- → Ice-breaker activities and language unblocking workshops
- → Presentation of participants (and their sending organization)
- → Intercultural evening
- → Interactive workshops on issues related to AI, youth work, learning etc.
- → Round tables, conferences, focus groups
- → Visits and immersion in local communities
- → Meetings with local personalities, sharing and working on best practices
- → Presentation of Erasmus+ funding program
- → Development of new projects and partnerships
- → Workshops to share best practice in AI as a learning resource based on participants' local or national realities

The seminar will be held in English and French. **You must be fluent in at least one of the two languages.**

Organiser

The seminar is organised by **AMSED: Association Migration, Solidarité et Echanges pour le Développement** (Migration, Solidarity and Exchanges for the Development Association). This Strasbourg-based NGO fights for socio-educational and professional inclusion through a number of key initiatives. To facilitate the socio-professional integration of its beneficiaries, AMSED offers a full range of support services: job sponsorship, public writer, support in the use of digital tools and French as a foreign language course. In addition, to encourage young people's participation in civic and democratic life, especially those with fewer opportunities, AMSED offers a wide range of online and offline citizenship activities throughout the year, including street events, awareness-raising on elections, international exchanges and volunteering, and training seminars such as this one. Find out more on our international informal network activities website: <https://network.amsed.fr/en/>.






The AMSED informal network is an independent organization, neither political nor religious. We organise intercultural exchanges for young people and youth workers through international volunteering and solidarity projects, as well as local socio-cultural workshops. AMSED's informal network is an independent organisation, neither political nor religious. We organise intercultural exchanges for young people and youth workers through international volunteering and solidarity projects, as well as local socio-cultural workshops.

We fight racism and xenophobia in the Euro-Mediterranean region by promoting and raising awareness of differences and diversity among young Europeans and Mediterraneans, through debates and exchanges on controversial topics: immigration and minorities, cultural diversity and inclusion, the exercise of citizenship and the right to vote for foreigners.

We create moments of intercultural exchange between young Europeans and Mediterraneans by jointly organising activities that encourage the discovery of other cultures and sensibilities.

Pedagogical preparation

Each participant must, in collaboration with the other participants of his or her sending organisation:

-  **Be prepared to present the sending organisation** (avoid PowerPoint presentations) by discussing its themes, objectives, activities and future plans (remember to bring brochures for the organisation fair)
 -  **Be prepared to present a best practice and a fact sheet** on AI in youth work and as a learning resource in your own country
 -  **Prepare short street interviews** on AI in own country and interview the local population, in the language of the country, with English subtitles and the logos of the European Union.
- After the seminar, each participant must **disseminate the results of the project** at local, regional, national, European and international level, both online and offline.



Logistical preparation and community rules

Participants are asked to:

- **Sign this infopack** (with date) and return it to nadege.amsed@gmail.com ; **Send travel information before arrival in Strasbourg** : a copy of all transport costs (plane, train, bus, etc.) to and from Strasbourg and the invoice; **the transport proposal must be sent to AMSED before 15 April**;
- Complete and return the application form on time;
- **Participate in the information webinar** (dates to be confirmed);
- **Be punctual** for all seminar activities;
- Leave your mobile phone switched off during sessions;
- Contribute to the smooth running of the sessions by arriving in the work rooms on time and taking an active part in the activities and workshops;
- Facilitate the work of the logistics team: volunteer to **ensure the cleanliness of accommodation, work and catering areas**; respect the sorting of garbage cans; respect basic rules of cleanliness and community life;
- **Respect the instructions given by the accommodation, leave your room clean and tidy on departure and do not break anything**
PLEASE NOTE: Any additional cleaning charges or deposits collected will be payable by the occupants of the accommodation concerned (in the form of a deduction from the ticket refund);
- Support AMSED in the event of a major problem;
- Respect cultural diversity and work in two languages;
- Be respectful of the teaching team, logistics team and other participants at all times.



PLEASE NOTE: no comments or behaviour of a sexist, racist, validist, ageist, LGBT-phobic or otherwise offensive nature will be tolerated. We can't guarantee a discrimination-free space, but we ask everyone to be open-minded, to accept criticism and to learn from others and from their mistakes in order to provide the most inclusive environment possible.

Dates and travel

The seminar will take place from July 22nd to 31st, 2025.

Participants will arrive at the “Camping de la Montage Verte” (accommodation) in Strasbourg on Tuesday afternoon, July 22nd, 2025, after 4pm and ideally before 8pm (start of the welcome evening). Accommodations will not be available before 4pm, but if you absolutely must arrive earlier, please contact us.

Departure is on the morning of Thursday, July 31st, 2025 : accommodations must be vacated (tidied and cleaned) by 10am.

Please keep us informed of your arrival and departure times as soon as possible!

Getting to the accomodation

Strasbourg is right next to the German border and close to Switzerland, so there are several options. Even though it is often the quickest way, it is preferable to avoid travelling by plane whenever possible in order to minimise the impact of the seminar on the environment.



By train

If possible, it's best to travel to Strasbourg Central Station by train from your country of residence, especially if you're coming from Europe: this means of transport is much less polluting than air travel. Think about discount cards, especially for young people.

Ticket reservation:

- Via SNCF (French rail service): <https://www.sncf-connect.com/>
- Via Deutsche Bahn (German rail service): <https://int.bahn.de/fr/offres>
- Via your national rail service



By bus

You can also reach Strasbourg by bus (also less polluting than air travel) from your country of residence, arriving at the Strasbourg bus station (place de l'Etoile).

Ticket reservation:

- Flixbus: <https://www.flixbus.fr/>
- BlablaCar: <https://www.blablacar.com/>
- Other local or international companies



By plane (Entzheim, Basel-Mulhouse or Frankfurt airports)

A. From Strasbourg Entzheim Airport (SXB)

Route Entzheim Airport – Strasbourg Central Station

Distance from Strasbourg city centre: 15km

Means of transport: TER train (9 min) Cost: approx. €4 per journey

Reservations:

- Train: <https://www.sncf-connect.com/>

More Information: <https://www.strasbourg.aeroport.fr/passagers/parkings-et-acces/navette-train/>

B. From Basel-Mulhouse Euro-Airport (BSL)

Route 1: Basel-Mulhouse Euro-Airport – St Louis Station – Strasbourg Central Station

Distance from Strasbourg city centre: 130km

Means of transport: Bus to St Louis station (10 min) - TER train to Strasbourg central station

Cost: 2.50€ (bus) + 28€ (train)

Reservations:

- Bus: <https://www.distribus.com/e-boutique> (please note, the ticket is valid 1 hour after purchase: don't buy it in advance!)
- Train: <https://www.sncf-connect.com/>

More information: <https://www.distribus.com/se-deplacer/navette-euroairport>

Route 2: Basel-Mulhouse Airport – Strasbourg bus station (place de l'Etoile)

Distance from Strasbourg city centre: 130km

Means of transport: bus (about 2 hours)

Cost: 10-15€

Reservations:

- <https://www.flixbus.fr/>

C. From Frankfurt Airport (FRA - Germany)

Route 1: Frankfurt Airport – Strasbourg central station

Distance from Strasbourg city centre: 220km

Means of transport: bus (Lufthansa) or train (Deutsche Bahn) (2h30)

Cost: 10-49€ - bus can be free if purchased with a Lufthansa plane ticket – Please contact us if you choose this option

Reservations:

- Bus: <https://www.lufthansa.com/fr/en/homepage>
- Train: <https://int.bahn.de/fr/offres>

Route 2: Frankfurt Airport – Strasbourg bus station (place de l'Etoile)

Distance from Strasbourg city centre: 220km

Means of transport: bus (Flixbus) (3h30)

Cost: 9-35€

Reservation:

- <https://www.flixbus.fr/>

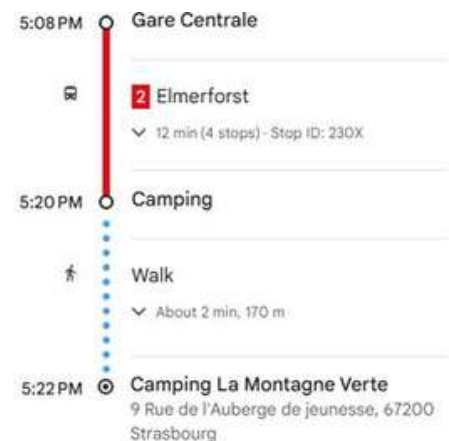
Note: for TER journeys, you can buy a TER Fluo Card, which gives you a 50% discount on all TER journeys in the Grand-Est region, costing 1€ (under 26) or 20€ (26 and over)

- To buy: <https://www.sncf-connect.com/app/catalogue/description/grand-est-carte-fluo>

How to get to the accomodation “Camping de La Montagne Verte”

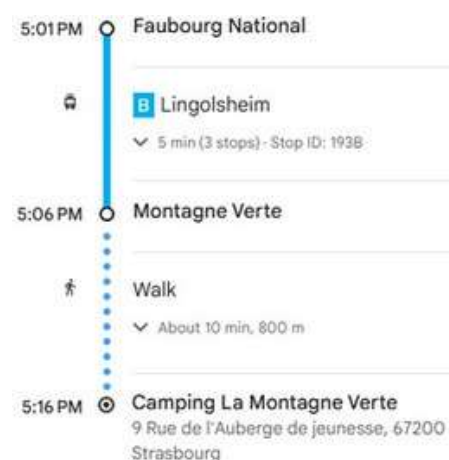
1. From Strasbourg central station

There are several ways to get from Strasbourg station to the Montagne Verte campsite by public transport.



Route 1:

From the train station, take Bus 2 at the Gare Centrale stop (located outside the station) in the direction of Elmerforst and get off after 4 stops at the Camping stop. From there, it is a 2-minute walk to the Camping de La Montagne Verte.



Route 2:

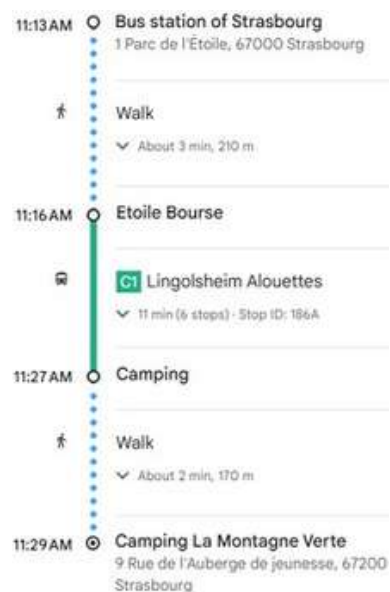
From the station, walk 6 minutes to the Faubourg National tram stop.

Take the Tram B towards Lingolsheim Tiergaertel for 3 stops. Get off at the Montagne Verte stop.

From there, it is a 10-minute walk to the campsite.

You can also take the C1 and C6 buses from the Montagne Verte stop for one stop to the Camping stop.

2. From the bus station in Strasbourg (place de l'Etoile)



From the bus station (place de l'Etoile), walk for 3 minutes to the bus stop Etoile Bourse. Then take the C1 bus towards Lingolsheim Alouettes for 6 stops, until you reach the Camping stop. From there, it's a 2-minute walk to the campsite.



Bus and tram tickets cost €2.10 at the kiosks and €2.50 on board the bus: remember to buy your ticket at the kiosks before boarding the bus. You will then get a reusable card loaded with a ticket. Keep the card in a safe place, as you will be able to use it for the return ticket, which will therefore be cheaper.

Please note: 

The fare is not printed on the card. If you wish to be reimbursed for your ticket (within the limits of your budget), you must request a receipt at the ticket machine. Please note: in Strasbourg, for trams and the G bus, ticket validation machines are located outside, at the stop. It is therefore imperative that you validate your ticket BEFORE boarding the tram/bus, otherwise you risk a fine of between €40 and €80, which cannot be reimbursed by AMSED.

Reimbursement

- To obtain reimbursement of **travel expenses tickets must be validated by AMSED prior to purchase.** Upon receipt, the project manager will indicate the maximum lump sum that will be granted.

When you arrive to Strasbourg, **keep your original tickets and boarding pass!** Otherwise you will not be entitled to a reimbursement.

AMSED will collect the original travel documents at the seminar (the date will be indicated in the schedule). You will need to provide:

- Invoices for all transport costs: bus, plane, tram, train, etc.
- Original transport tickets: tram tickets, train tickets, paper or electronic Boarding Pass

When you return from the seminar, send the original tickets and boarding pass to nadege.amsed@gmail.com. If you have paper tickets or boarding passes, please send them by post to AMSED:

Espace Nord-Sud - 17 rue de Boston
67000 Strasbourg
FRANCE

Without proof, AMSED will not be able to reimburse your transport tickets.



Please note that some electronic Boarding Passes are no longer accessible after the flight, so **be sure to take a photo, printout or screenshot of the Boarding Pass as soon as possible.**

Transport costs will be reimbursed within 6 months after receiving all the necessary receipts and documents (and bank details).

Amount of reimbursement:

European rules relating to travel expenses vary according to a scale of kilometres between the place of departure and the place of arrival. That's why it's **essential to keep all the receipts between your place of departure and Strasbourg**. It is possible that the amount of the fixed price will vary if you don't have all the receipts!

For example, for a maximum package of €275 granted:

Transport costs over 275 € AMSED will reimburse €275 and **you will be responsible for the difference in costs**. For example, if your transport costs amount to €300: €275 paid by AMSED and €25 paid by you.

Transport costs under 275 € AMSED will reimburse you **up to the justified amount**. For example, if your transport costs amount to €250.67, AMSED will reimburse you €250.67.

● **Visa fees** will be reimbursed, provided that you bring the following:

- A copy of the visa in the passport
- The copy of the stamp in the passport (if applicable)
- The visa receipt (invoice on which the participant's name must be indicated)

Insurance or travel costs related to visas will not be covered.



Please note the following points:

- **If the participant does not attend the seminar or does not take part in all the activities, the tickets will not be reimbursed:** remember to take out cancellation insurance;
- Be reasonable: select the cheapest tickets possible (no first class, etc.).

The following will not be reimbursed:

- Passport renewal fees;
- Insurance costs;
- Fees for flight changes or missed flights;
- Expenses outside the project dates;
- The price difference between the authorised amount and the price of your ticket;
- Excess luggage charges;
- Taxi costs.

Only return tickets to Strasbourg will be reimbursed. Any cost in excess of the maximum authorised will not be reimbursed!

Amount of travel reimbursement:

10-99 kms		100-499 kms		500-1999 kms		2000-2999 kms		3000-3999 kms	
/	Green transport	/	Green transport	/	Green transport	/	Green transport	/	Green transport
28 €	56€	211 €	285 €	309€	417 €	395€	535 €	580€	785 €

Accommodation

The seminar will take place at Camping de la Montagne Verte, where you will be staying in the Mobile-Home Cottages and where the activities will take place.

Address:

9 rue de l'Auberge de Jeunesse - 67200 STRASBOURG

Website:

<https://www.camping-strasbourg.com/>

[Google Maps link](#) 



You will be staying in 6-person mobile homes, sharing a room with other participants. The mobile homes are equipped with a living room, a small bathroom and a kitchenette, where you can prepare your own breakfast (ingredients provided).



Do not forget to bring:

- Your own toiletries (towels, shower gel and shampoo, toothbrush, toothpaste, etc.)
- A swimsuit
- Earplugs if you're a light sleeper
- Sunscreen
- Your passport and proof of health insurance
- Games for the evenings
- Culinary specialties from your region for coffee breaks
- Brochures for the organisation fair
- Culinary and cultural specialties from your country/region for the intercultural evening (songs, dances, music, food, drinks, etc.)

Programme

The seminar will last 8 full days plus the day of arrival and departure.

Each day, activities will last from 9am to 6:30pm. The day will be divided into 4 working sessions of 1h30 each, with two 30-minute coffee breaks and a 2-hour lunch break.

There will be an afternoon of free time; during the seminar. There will be non-mandatory evening sessions. Some evenings will form an integral part of the seminar and are therefore mandatory, such as the intercultural evening, the organisation fair and the photo safari restitution evening.

You will be informed of these later. The other evening sessions are not mandatory.

Health and food

Please note: **you must have health insurance!** If you are European, don't forget your European Health Insurance Card (to be ordered in advance from your local health insurance office). Otherwise, consider getting your own insurance.

Emergency Numbers:

- European emergency number, free from all cell phones: 112
- SAMU (medical emergency): 15
- Police: 17

If you have any **health problems** (allergies, food intolerances or any other medical condition), please let us know. We guarantee the respect and anonymity of this information and it is necessary for us to receive it in order to better organise your stay.

Please note: if you need to take **medication**, remember to bring enough for the entire duration of the seminar or a refill prescription (valid in France if issued in the EU, if the treatment is marketed in France). If you are travelling by plane, remember to bring the prescription to justify the possession of medication at customs. AMSSED cannot be held responsible for any problems with the supply of medicines. If necessary, please contact us.

Meals will be prepared in advance by the logistics team. It is therefore very important to let us know in advance if you have any special dietary requirements: please make sure you fill in the application form and contact us by e-mail if necessary.

All **meals** will be shared, from the first dinner on the evening of July 22nd to the last breakfast on the morning of July 31st. Breakfasts are prepared independently in the chalets, which have kitchenettes.

In addition, all participants will be asked to **leave their accommodation tidy and clean**, with all equipment in good condition. This includes bedrooms and communal areas: kitchen, toilets, showers, etc.

Respect of the environment

All participants are asked to respect the accommodation, equipment and environment. Please use water and electricity sensibly, and do not leave any garbage behind. Participants are also invited to take note of the selective waste sorting system set up by the Strasbourg municipality:

- All packaging (plastic, metal) and paper must be sorted in the yellow bin (empty, even if it is dirty, separated for other packaging)
- Household waste (and broken crockery) goes in a special bin: the blue bin
- Glass packaging goes into a glass bin

In addition, for everyone's health and well-being, smoking and vaping (electronic cigarettes) are strictly forbidden inside the accommodation and activity rooms, as well as in outdoor areas where people can relax or where there are large numbers of people. Smoking may only take place during breaks and outdoors.

Join now with Tavo Europa!

Educator Pass 2025

You are welcome to join our new educational programme for 2025! Dive into non-formal learning exploration for a 75 euro fee that will unlock your potential to join all training courses, professional study visits, events in Lithuania and abroad until the end of the year, and also supports us to find new exciting and exclusive opportunities for community members!

Please do not pay any fee until you receive a confirmation letter to join the programme. If you want to join the project, please fill the application form, whether you have already participated or not. Bear in mind that Tavo Europa keeps the right to send the most suitable and motivated participants to all of our projects.

For more projects: Explore the world and learn together with the help of Tavo Europa. Join the group with more opportunities: <https://www.facebook.com/groups/186132221744993>



Find our form here: <https://www.tavoeuropa.eu/training-courses/ai/>

