



Co-funded by  
the European Union



# INFOPACK



MYTH  
IN THE MIDDLE  
~~~~~

POLAND - ŁOMŻA,  
JUNE 25 - JULY 4, 2025



Youth Human Impact



Youth Human Impact

# *WHO ARE WE?*

Youth Human Impact Association is an organization that gives young people creative opportunities for self-education and personal development in order to find a passion for acting. We strive to arouse among our members the entrepreneurial attitude and sense of initiative. We organize educational projects both in Poland and abroad. We work in an unconventional way and focus on non- formal education.

Youth Human Impact Association places a strong emphasis on educating youth in its activities. We build and give opportunities to gain knowledge and skills that are not offered in the traditional school system. We give them the opportunity to gain knowledge and skills that will be used by them in everyday life: private and professional. In this way, we create the opportunity to enter the job market more easily. We always involve young people in our activities while struggling with various obstacles: geographical, economic, social.

We believe that everyone is equal and has the same right to acquire knowledge and education.



Co-funded by  
the European Union



Youth Human Impact

# *GENERAL INFO ABOUT THE PROJECT*

The project focuses on exploring the role of myths in culture, history, and contemporary society. Special emphasis is placed on understanding how myths shape identity, influence social narratives, and impact our perception of reality. Through workshops, discussions, and artistic activities, participants will deepen their awareness of the universality of myths and their relevance in modern life.

A key component of the project is fostering intercultural education by promoting dialogue and the exchange of mythological stories and traditions among participants from diverse cultural backgrounds. Participants will engage in creative expression through theatre, literature, and interactive narratives, exploring how myths continue to shape the way we perceive the world today.

By combining these elements, the project supports participants' critical thinking, cultural awareness, and creative skills. It equips them to engage with and analyze contemporary social and cultural narratives. The project also strengthens intercultural cooperation and community building, encouraging openness, tolerance, and collaboration in line with Erasmus+ values.



Co-funded by  
the European Union



Youth Human Impact

# PROJECT'S AIMS

1.

**Exploring the role of myths in society:** understanding how myths shape culture, identity, and historical narratives, and their ongoing influence on the modern world.

2.

**Enhancing critical thinking and cultural awareness:** encouraging participants to critically analyze myths from diverse cultures and appreciate the impact of these narratives on values, social structures, and collective consciousness.

3.

**Promoting creative expression and storytelling:** allowing participants to creatively reinterpret mythological stories through theatre, literature, and interactive storytelling, fostering imagination and artistic collaboration.

4.

**Fostering intercultural dialogue and exchange:** providing a platform for participants from various cultural backgrounds to share myths, stories, and traditions, building mutual respect and understanding.

5.

**Equipping participants with skills for analyzing contemporary narratives:** helping participants recognize how modern myths, including those in media, politics, and popular culture, shape public perception and influence societal trends.



Co-funded by  
the European Union



Youth Human Impact



# MAIN ACTIVITIES



## **Workshops on mythology and cultures**

Participants will engage in discussions and activities analyzing myths from different cultures, exploring their impact on identity, values, and social narratives. These workshops will provide tools for critically examining how myths shape the world today.



## **Creative expression through art**

Participants will reinterpret mythological stories through artistic mediums such as theatre, literature, and interactive storytelling, fostering creativity and collaborative work while deepening understanding of mythological themes.



## **Intercultural dialogue**

Through group discussions and collaborative projects, participants will share myths from their own cultures and learn from others, promoting mutual respect and intercultural understanding.

The activities will be led by a trainer,  
as well as the participants themselves.



Co-funded by  
the European Union



Youth Human Impact

# *PARTICIPANT'S PROFILE*



**This is the project for you, if:**

- You are between the ages of 18 and 30.
- You have a B1+ level of English skills.
- You are interested in exploring how myths shape perception, identity, and social narratives, with a focus on cultural aspects.
- You are open to engaging in artistic and creative activities, such as theatre, literature, and storytelling.
- You have a high motivation to learn about cultural myths, their reinterpretations, and their role in building identities.
- You are willing to actively participate in workshops, discussions, and group activities throughout the exchange.

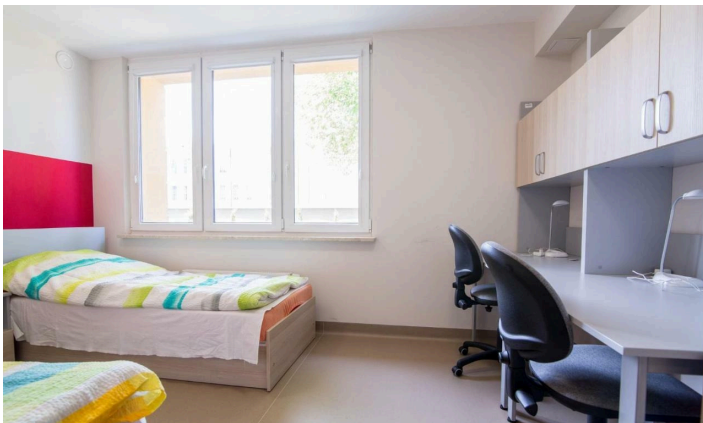


Co-funded by  
the European Union



Youth Human Impact

# ACCOMMODATION



**Dom Studenta Rubikon**  
Wiejska 16a, 18-400 Łomża



Co-funded by  
the European Union





# ***REIMBURSEMENT***

**You must reach ŁOMŻA on 25.06.2025 by 18:00!**

Travel costs are reimbursed under the condition of participation in  
all  
activities up to 90 days from the date of receipt by Youth Human  
Impact of  
the results of the project dissemination activities, and a  
complete set of  
documents such as travel reimbursement forms and original  
tickets.



Co-funded by  
the European Union



Youth Human Impact

# Travel

We will be traveling by our van. If you have any questions about the trip, please read this file and feel free to contact us for any clarifications. The youth exchange participants will travel using the organization's vehicle. The trip will begin on June 25th from Lithuania. You are expected to arrive on the same day (in the evening) at the venue. The return trip will be organized in the same way. We expect you to be back in Lithuania by July 4th in the second part of the day/night. Participants will be driving the car all the way. You will need to pay for diesel and road taxes. However, these expenses will be reimbursed once you return home and present all original invoices. Before departure, all participants will be required to sign the rules for using our vehicle. Each invoice must include our organization's credentials:

**Tavo Europa**  
Mozūriškių g. 17-8, LT-06298 Vilnius  
Registration Code: 304638334



# *POLAND TIPS*



As a member of the European Union, Poland has agreements for the recognition of insurance systems. Those who possess a European insurance card should therefore be covered for illness and accidents in the same way as they are in their country, please bring with you EHIC (European Health Insurance Card).

The currency in Poland is ZLOTY. Paying by card is the main form of payment but having a few zlotys in cash won't hurt anybody :)

In Poland, there is a **total ban on drinking alcohol in public places** such as railway stations, parks, streets. Breaking this law threatens the mandate of the altitudes of 100 zł = 25 euro. In Poland, there is also a **ban on smoking in public places** such as cinemas, theatres, railway stations, airports, and bus stops. Sometimes in these places it is a special place for smoking.

Before coming to Poland, check the weather. One day may be sunny, the other day it can rain - you never know! Take appropriate clothing.

There will be cultural evenings during the project. Before arrival, prepare a quick presentation (20 min) about your country, a short quiz and maybe a dance. Take your flag and national symbols. Don't forget about national food and snacks :)

Reimbursement of travel expenses will be sent to the sending organization—not individually.



Co-funded by  
the European Union



Youth Human Impact

# Explorer Pass 2025

You are welcome to join our new educational programme for 2025! Dive into non-formal learning exploration for a 75 euro fee that will unlock your potential to join all training courses, professional study visits, events in Lithuania and abroad until the end of the year, and also supports us to find new exciting and exclusive opportunities for community members! Please do not pay any fee until you receive a confirmation letter to join the programme. If you want to join the project, please fill the application form, whether you have already participated or not. Bear in mind that Tavo Europa keeps the right to send the most suitable and motivated participants to all of our projects.

For more projects: Explore the world and learn together with the help of Tavo Europa. Join the group with more opportunities:  
<https://www.facebook.com/groups/186132221744993>

## Join now



<https://www.tavoeuropa.eu/training-courses/eu-and-me>



Co-funded by  
the European Union



Youth Human Impact