



Storytelling for Inclusion

Băile Govora, Vâlcea, Romania

Introduction

When & Where

Storytelling for Inclusion – will take place from the **16th of April** (arrival day) until the **25th of April 2026** (departure day) in Băile Govora, Vâlcea County, Romania.

Content

The programme combines interactive workshops, personal and group storytelling, creative expression, and reflection groups, supporting participants in transforming personal experiences into meaningful narratives that promote inclusion and respect for diversity. Special attention is given to ethical storytelling, representation, and the responsible use of stories when working with vulnerable or marginalised groups.

The Organisation

Ofensiva Tinerilor Association was founded in 2004, promoting European values being an integral part of its purpose.

Our mission is to provide young people with accessible educational opportunities to help them reach their full potential. We do this by educating students through non-formal activities on social issues such as diversity, gender equality, inclusion, anti-bullying and non-discrimination.

INFO PACK

Storytelling for Inclusion

Băile Govora, Vâlcea, Romania



What we offer

The training offers a safe and creative learning space where participants will reflect on identity, diversity, and social exclusion, while developing practical storytelling skills that can be applied in educational, youth work, and community contexts. Through non-formal education methods, experiential learning, and guided reflection, participants will explore how stories shape perceptions, challenge stereotypes, and foster understanding between people from different backgrounds.

Learning is supported through daily reflection and the Youthpass framework, helping participants recognise and articulate their learning outcomes. The course also includes an introduction to the Erasmus+ Programme, encouraging participants to further engage in international learning opportunities.

By the end of the training course, participants will:

- Understand key concepts related to inclusion, diversity, identity, and social exclusion
- Recognise the role of storytelling in shaping attitudes, beliefs, and social narratives
- Develop practical storytelling skills for educational and inclusion-focused activities
- Strengthen empathy and active listening competences
- Apply ethical principles when using personal and others' stories
- Create inclusive and empowering narratives that challenge stereotypes
- Reflect on personal learning and development using the Youthpass framework
- Explore opportunities for further involvement in Erasmus+ projects

Learning Objectives

INFO PACK

Storytelling for Inclusion

Băile Govora, Vâlcea, Romania



Good to know

- Participants should be involved in youth work, being part of the staff or volunteers of the sending organization.
- All participants who would like to join this training course, would need to have a sending organization, who will sign a short mandate form with us before sending the participant, in order to formalize our partnership.
- Participants will be selected according to their motivation to participate in the training and the willingness to be part of the learning journey.
- We will be announcing the participants that will be selected to be part of the training, who then will have to announce their sending organisations of the fact that they were selected to participate in the training. After this, we will proceed with signing the official partnership/mandate form.

By combining experiential learning, non-formal education methods, and diversity-focused practices, the programme creates a safe and engaging space where participants develop self-awareness, empathy, effective communication, and facilitation skills.

We are committed to ethical storytelling, responsible representation, and the respectful use of personal narratives, especially when working with vulnerable or marginalised communities.

By encouraging critical reflection, awareness of social exclusion, and the courage to challenge stereotypes, this programme contributes to building more inclusive, empathetic, and connected communities.

Our Commitment

Logistical aspects >

LOGISTICAL ASPECTS



Transportation

For arrival to Băile Govora, Vâlcea Romania, participants can:



Flying to Bucharest – Otopeni airport (Henri Coanda)

Direct transfer from the airport to Băile Govora: You can choose this option that is fast and comfortable but **you need to book in advance (minimum 5 days)**. Here is the website where you can find all the regular transfers and booking: <https://www.autogari.ro/Transport/Otopeni-BaileGovora? zi=2025-02- 01&pas=1-0-0-0-0>

Please be advised that **there are only 2 – 3 transfers per day!**

Direct transfer from the airport to Râmnicu Vâlcea (the closest city to Baile Govora)

You can choose this option that is also fast and comfortable but you need to book in advance. Here is the website where you can find all the regular transfers and booking: <https://www.autogari.ro/Transport/Otopeni-RamnicuValcea? zi=2025-02- 01&pas=1-0-0-0-0>

If you will choose this option we can organise a fast transfer for you from Râmnicu Vâlcea to the hotel in Băile Govora. (25 minutes drive) Please make sure you communicate your plan to us.



LOGISTICAL ASPECTS



Transportation

For arrival to Baile Govora, Valcea Romania, participants can:



Airport – Gara de Nord – Autogara Militari – Râmnicu Vâlcea

This option is good if you would like to visit Bucharest or do not have any other options for direct transfers.

Here is the step by step process:

1st Step – from the Airport – Arrivals Terminal take the direct train to Gara de Nord – Bucharest – Note that this train departs every 45 minute from the airport, is available 24h and takes 25 minutes to get to Bucharest. The price for one ticket is 5 lei (1 euro) – buy the tickets directly in the train, at the airport CFR counter or online.

(<https://www.cfrcalatori.ro/>)

2nd step – once arrived in Gara de Nord – take the Metro from Gara de Nord 1 – Metro station – LINE M1 – direction Pantelimon/Republica, change in Eroilor station to LINE M3 – direction Preciziei . Your stop will be Păcii Station. The price of a 2 way metro is 10 lei (2 euro). You can buy tickets from the station or you can pay directly with credit card.



LOGISTICAL ASPECTS



Transportation



For arrival to Baile Govora, Valcea Romania, participants can:

3rd step – At Pacii Metro Station go above ground – cross the street and go to Autogara Militari. There are regular busses that connect Bucharest with Râmnicu Vâlcea. Please consult the website below for the program reservations. You can either buy online or buy directly from the driver. The cost of a bus ticket varies between 45 – 60 lei (9 – 12 euro)

<https://www.autogari.ro/Transport/Bucuresti-RamnicuValcea>

Please let us know your choice of transport and arrival hours at least two days before the event. For night arrivals let us know so we can arrange private transfers.



Regardless of the means of transport chosen, please save all your travel documents for reimbursement purposes



LOGISTICAL ASPECTS



Accommodation

You will be staying at Vila Crizantema

<https://vilacrizantemagovora.ro/>

Băile Govora is a charming SPA town and resort located in Vâlcea County, Romania, renowned for its therapeutic mineral waters and tranquil surroundings. Nestled in a picturesque valley surrounded by rolling hills and lush forests, the town offers a serene escape for visitors seeking relaxation and rejuvenation. The town is also known for its peaceful atmosphere, clean air, and well maintained parks. Architecturally, Băile Govora boasts a blend of neo-Romanian and Art Nouveau styles, reflecting its development during Romania's Belle Époque period. You will stay at Vila Crizantema, a charming 3-star hotel situated near the town center, surrounded by beautiful natural scenery. This hotel has a historical significance as it once belonged to the famous Romanian dictator Nicolae Ceaușescu.



More >

LOGISTICAL ASPECTS



Participants will be hosted in rooms of 2 people, according to the same gender. There is no possibility for single rooms.

Wi-fi will be provided at the accommodation Please keep in mind that you will be a big group of participants, in case the Internet is slow or not working at times, it is due to the fact that most probably all of you will try to connect at the same time to the same wireless router. Patience and understanding are required :)



More >

LOGISTICAL ASPECTS



Food



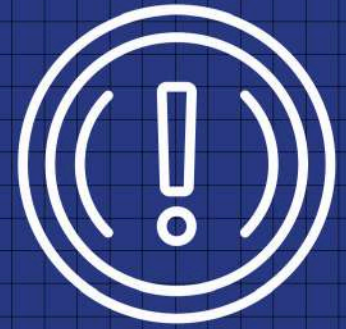
We will provide everyone with 3 meals/day. Participants will be asked for special dietary needs in the application form. Please make sure to fill in the specific section, as it will help us and the restaurant staff prepare and offer the best service possible.

In case you will not mention your special dietary need in the application form, we will not be able to guarantee that it will be taken into consideration by the restaurant. Please keep in mind that here we refer to allergies, intolerance to any food groups as well as not eating specific types of food out of religious reasons. Breakfast and dinner will be delivered at your accommodation and lunch will be delivered at the training place.

Participants will contribute to maintaining the space clean – this means everyone will wash their dishes and cutlery and help setting the table.



IMPORTANT ASPECTS



Reimbursement

Each participant will receive a reimbursement form; participants' travel costs will be reimbursed according to the funding rules of the ERASMUS+ program.

Reimbursement will be done by bank transfer to each participant right after our association will receive all original both ways travel documents from all participants (round trip boarding passes, flight itinerary, bus or train tickets).

Based on the distance bands (that can be found in the Erasmus+ Programme Guide), we will reimburse the travel costs as according to the table below:

Travel support	Contribution to the travel costs of participants, from their place of origin to the venue of the activity and return.	Travel distance	Green travel	Non-Green travel
	Below 500 KM, participants will, as a general rule, travel with low-emissions means of transport.	10 – 99 km	56 EUR	28 EUR
		100 – 499 km	285 EUR	211 EUR
	Financing mechanism: contribution to unit costs.	500 – 1999 km	417 EUR	309 EUR
		2000 – 2999 km	535 EUR	395 EUR
	Rule of allocation: based on the travel distance per participant. The applicant must indicate the distance between the place of origin and the venue of the activity ⁵⁶ by using the distance calculator supported by the European Commission ⁵⁷ .	3000 – 3999 km	785 EUR	580EUR
		4000 – 7999 km	1188 EUR	1188 EUR
	If necessary, individual support to cover subsistence costs are is eligible for travel time before and after the activity, with a maximum of two travel days for participants and accompanying persons receiving non-green travel support, and a maximum of six travel	8000 km or more	1735 EUR	1735 EUR

More >

IMPORTANT ASPECTS



Do not forget to pack:

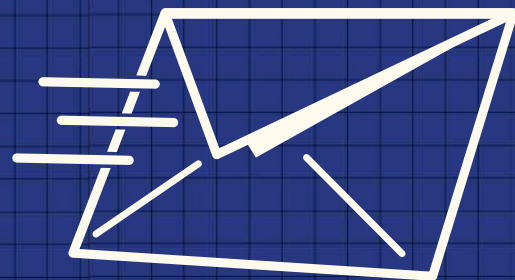


- ☒ Your good mood! :)
- ☒ Some outdoor clothing - you will like being comfy in the nature and evenings can be slightly cold outside;
- ☒ Mosquito spray - summer in the nature can provide some mosquitoes...
- ☒ Music you like, we could use it during the breaks and working sessions;
- ☒ In case you use any kind of medication please make sure you would have enough for your stay;
- ☒ Laptop/photo camera - if you wish;
- ☒ Everything you need for your own personal comfort and for your evenings entertainment: musical instruments, games, sports shoes and clothes, etc.;
- ☒ Optional: Some traditional sweets or drinks you can share with other participants during free evenings.

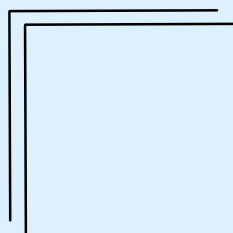
See you!

The end.

CONTACT



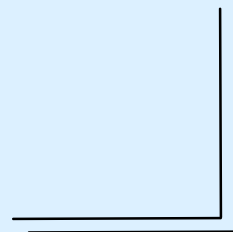
If you have any questions, don't hesitate to contact us!



Project Coordinator in Lithuania

Julija Staniulyte:

julija@tavo-europa.eu



JOIN NOW WITH TAVO EUROPA!

Educator Pass 2026. You are welcome to join our new educational programme for 2026!

Dive into non-formal learning exploration for a 75 euro fee that will unlock your potential to join all training courses, professional study visits, events in Lithuania and abroad until the end of the year, and also supports us to find new exciting and exclusive opportunities for community members! Please do not pay any fee until you receive a confirmation letter to join the programme.

If you want to join the project, please fill the application form, whether you have already participated or not.

Bear in mind that Tavo Europa keeps the right to send the most suitable and motivated participants to all of our projects.

For more projects:

Explore the world and learn together with the help of Tavo Europa.

Join the group with more opportunities:

<https://www.facebook.com/groups/186132221744993>

