



Funded by
the European Union

ACDC - ACTIVE CITIZENS DRIVING CHANGE

18.03.2026-27.03.2026

18TH AND 27TH TARVEL DAYS

LA PADURE PENSION

BREBU, CARAS-SEVERIN, ROMANIA

2025-1-R001-KA151-YOU-000297339

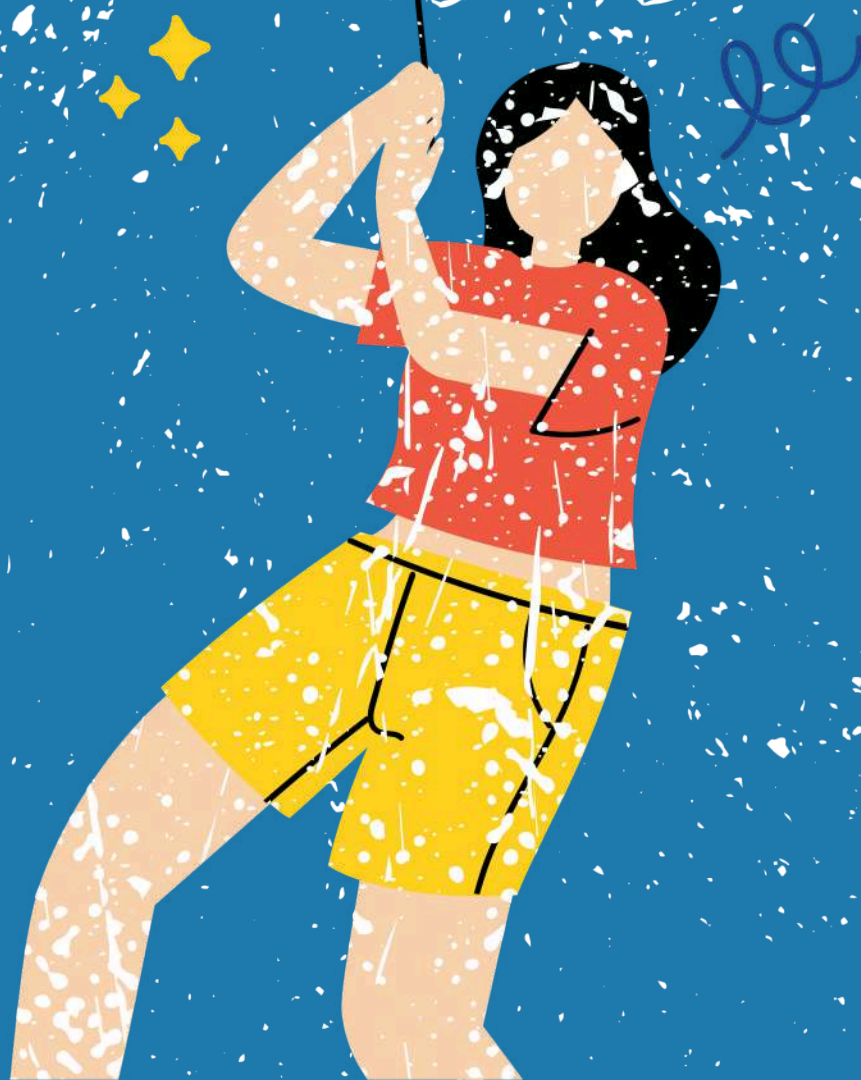




Funded by
the European Union

ABOUT THE PROJECT

This project creates a space for young people to connect across borders, develop confidence, and build skills for life and work. Participants will engage in workshops, group discussions, and cultural activities exploring themes like diversity, belonging, and civic participation. Through this shared experience, young people will discover how to contribute meaningfully to their communities, exercise their voice in society, and become active agents of change at local and European levels.



OBJECTIVES



Funded by
the European Union

- **Support personal growth for youth with limited travel opportunities. Build confidence, language, digital, and intercultural skills to prepare participants for education and employment.**
- **Combat discrimination through intercultural dialogue and inclusive activities. Empower disadvantaged young people to overcome barriers and actively contribute to diverse communities.**
- **Inspire youth to engage in decision-making and civic life. Explore participation tools and develop ideas for positive community change at local and European levels.**





WORKING METHODS



Funded by
the European Union

This project uses **non-formal education** to make learning active, interactive, and meaningful. Participants will engage in workshops, group discussions, creative activities, and peer-to-peer learning to explore key themes. We'll use methods like brainstorming, role plays, debates, and small group conversations to encourage participation and idea-sharing as well as team-building exercises to create strong connections among participants. Throughout the project, there will be regular moments for reflection and evaluation so everyone can learn from their experiences.

All participants will receive a **Youthpass certificate**! Learn more at www.youthpass.eu



Funded by
the European Union

PARTICIPANT PROFILE

**6 Participants +
1 Team Leader**
from each
PARTICIPATING
country.



Ages: 15-20 (18+
without upper age
limit for group
leaders)
Only programme
countries are
accepted



Funded by
the European Union

VENUE



The participants will be accommodated in “La Padure” Pension in Brebu village near Resita, Caras-Severin. the participants will stay in 3 - 4 bed rooms with their own bathroom. The rooms will be shared interculturally mixed, but separated by gender.

The venue has internet, a video projector, a conference room, a dining room with its own restaurant and a big green yard. It is located near the main road but surrounded by forest.

CHECK the place out here:

<https://www.facebook.com/lapadureinbrebu>





Funded by
the European Union

PREPARATION

Please note that there are **no shops available NEAR the venue**, so participants are encouraged to bring all necessary items (hygiene products, medicine, house shoes) or personal necessities, in advance. Towels and bedsheets are provided by the venue.

Cultural Nights: Participants are expected to bring **cultural items or traditional food** from their home country to contribute to the Cultural Night they will be organizing. Each evening will feature a different cultural presentation.





Funded by
the European Union

An illustration of a person with dark hair, wearing a blue jacket over a white shirt and yellow pants, holding a large white sign with the word 'TRAVEL' in blue letters and a yellow megaphone.

TRAVEL

The closest airport is in Timisoara, 120 km from the venue. From there you take the E4B Bus to North Rail station, then another train to **Caransebeș OR Reșița**.

The tickets can be bought at the train station with cash or online here:
<https://mersultrenurilor.infofer.ro/en-GB/Itineraries>
there is no direct public transportation to the venue.

From Caransebeș/Reșița we will arrange pick-ups according to your arrival time. If you arrive in Reșița we will accommodate you in our Association's Youth Center until we take you to the main venue.



Funded by
the European Union

MORE DETAILS

If you come by car, you can arrive directly at the venue. You can find the place and the coordinates **ON MAPS: La Padure Pension in Brebu, Caras-Severin**. PLEASE note that you must be **at least be 2 participants coming together for it to count as carpooling (green travel)**.

Please contact your sending NGO first and afterwards us for the final travel plan. we will offer any assistance if needed!



BUDGET



Funded by
the European Union



The project is **free of charge!** We do not take participation fee from participants in any of our projects!

Accommodation, food, and materials during activity days are fully covered by the project. The travel reimbursement is based on the distance band from your departing city (necessary from the country of the sending NGO) to Brebu, Caras-Severin, Romania. Using European Commission's distance calculator and the budgets approved within Erasmus+ Programme!

Link: <https://erasmus-plus.ec.europa.eu/resources-and-tools/distance-calculator>

- 10 - 99 km - 28 EUR
- 100 - 499 km - 211 EUR (Green travel up to 285 EUR)
- 500 - 1999 km - 309 (Green travel up to 417 EUR)
- 2000 - 2999 km - 395 EUR (Green travel available up to 535 EUR)

USEFUL INFORMATION



Funded by
the European Union

March in Brebu, Romania brings early spring weather with daytime temperatures around 10-15°C and cooler nights (5-10°C or lower).

Pack warm layers, a waterproof jacket, comfortable walking shoes, and accessories like hats/gloves for chilly evenings. Always check the weather forecast closer to your arrival for the most accurate information!

DO not forget to bring:

- ID/passport
- Insurance (EHIC or private insurance)
- your own medicine





Funded by
the European Union

PARTNERS INFORMATION

- ROMANIA- NevoParudimos
- CZECH REPUBLIC- Tmelnik
- LITHUANIA - Asociacija Tavo Europa
- SERBIA - Student union of vrsac
- BULGARIA - Teen Spirit
- ITALY- Tera International
- GREECE- Hellas for us





Funded by
the European Union

CONTACT INFORMATION

PROJECT COORDINATOR IN LITHUANIA

Julija Staniulyte: julija@tavo-europa.eu





Funded by
the European Union

JOIN NOW WITH TAVO EUROPA!

Explorer Pass 2026. You are welcome to join our new educational programme for 2026! Dive into non-formal learning exploration for a 75 euro fee that will unlock your potential to join all youth exchanges, study visits, events in Lithuania and abroad until the end of the year! This membership fee helps to support us and assures more resources on looking for exclusive opportunities for members.

Please do not pay any fee until you receive a confirmation letter to join the programme. If you want to join the project, please fill the application form, whether you have already participated or not. Bear in mind that Tavo Europa keeps the right to send most suitable and motivated participants to all of our projects.

For more projects:

Explore the world and learn together with the help of Tavo Europa.

Join the group with more opportunities:

<https://www.facebook.com/groups/186132221744993>

