

Erasmus+ Training
course

PLAY & GO GREEN



INFOPACK

MOLLINA, SPAIN

22ND - 28TH APRIL 2026



Co-funded by
the European Union

Erasmus+
Enriching lives, opening minds



GOBIERNO
DE ESPAÑA
MINISTERIO
DE JUVENTUD
E INFANCIA

injuve



AYUNTAMIENTO DE
PUENTE GENIL



Infopack Index

INTRODUCTION	3
AIM OF THE PROJECT	4
OBJECTIVES	5
IMPORTANT INFORMATION	6
PARTICIPANT PROFILE	7
PARTNER RESPONSIBILITIES	8
PARTICIPATION GUIDELINES	9
REIMBURSEMENT CONDITIONS	10
TRAVEL INSTRUCTIONS	14
ACCOMMODATION AND FOOD	16
CONDUCT AND ACCOMMODATION POLICY	17
WHAT TO BRING?	19
CONTACT	20

Introduction

The Europa2020 Association, in collaboration with Ayuntamiento de Puente Genil, is organizing an international training course in Mollina, scheduled for April 22nd-28th,2026.

All costs of the project, including accommodation, food, transportation, workshops and maintenance are covered by the Spanish National Agency of the Erasmus+ Program.

Aim of The Project

The aim of TC “Play & Go Green” is to equip youth workers with innovative methodologies in eco-entrepreneurship and social entrepreneurship through gamification and game-based learning. The course strengthens their capacity to support young people in developing entrepreneurial competences aligned with sustainability, social impact and the EntreComp framework.

Objectives

- Train youth workers in eco-entrepreneurship and ecosocial business models
- Strengthen key entrepreneurial competences using the EntreComp framework
- Introduce gamification and game-based learning as innovative educational tools
- Increase the attractiveness and accessibility of entrepreneurship education
- Promote sustainability and social impact in youth work

Important Information

Activities	Workshops in plenary and teams, outdoor and indoor activities, intercultural evening, visits, reflection and evaluation according to agenda
Countries	Partner organizations from 8–10 European countries (including Spain). Final list will be confirmed before the project.
Participants	24 pax from 8–10 different countries (including Spain). Youth workers, trainers, educators and NGO staff who work directly with young people and are interested in eco-entrepreneurship and social entrepreneurship.
Deadline	Submitting OUR registration form for SELECTED participants as soon as possible . Link for the registration form will be shared by participants NGO and is put here.

Participant Profile

- This training course is intended for youth workers, trainers, educators and NGO staff who work directly with young people and are interested in eco-entrepreneurship and social entrepreneurship.
- Participants should be working with youth and/or be motivated to explore topic of multicultural work and learning, its peculiarities.
- It is designed for those who wish to integrate gamification and game-based learning into their educational practice and support young people in developing entrepreneurial competences in an engaging and sustainable way.
- Participants have to participate in the whole duration of the TC and attend all activities.
- Selected participants are in charge of dissemination and visibility activities online and offline.

Partner's responsibilities

INFORMATION	To let know the participants all important information about the programme.
CONTRIBUTION	To contribute to final version of the agenda, methodology and activities and repartition of the budget.
VISIBILITY	To follow the activities related to the course and together with participants to provide visibility of the project.
SURVEY	To check that participants will fill out the survey provided by the European Comission in BEN.
AWARENESS	To aware our participants to be prepared for mobility.

Participation Guidelines For The Training Course

IMPORTANT

We are excited to welcome participants who are deeply interested in exploring the realms of Erasmus+ and the specific themes our training course offers.

This experience is designed for individuals keen on gaining knowledge, skills, and insights that can be applied in educational settings and beyond. It's an opportunity to engage with like-minded individuals from across Europe and to contribute to a collective learning environment.

As part of our commitment to creating a conducive and safe learning atmosphere, we would like to highlight that this training course is not intended for those looking to partake in tourism activities in Spain. While we appreciate the cultural richness and beauty of our location, our focus remains firmly on the educational objectives of the program.

Reimbursement Conditions

Participants must take part in all activities of the TC from April 23rd to April 27th 2026 (Working days). They should arrive to Mollina between 5 - 8 pm on April 22nd and should leave Mollina before 10 am on April 28th.

PROVIDING ORIGINAL TRAVEL DOCUMENTS

Buying all tickets is an obligation of participants (with partners' organizations support).

In order to be reimbursed participant has to provide all evidences of travelling: **ORIGINAL train/bus tickets, boarding passes, invoices, etc., as well as the evidence of payment (e.g. bank transcript of payment).**

Physical tickets must be sent by post, while electronic tickets must be sent by email. Everything will be explained in more detail in the next communications.



Reimbursement Conditions

ERASMUS FINAL REPORT FROM THE EUROPEAN UNION

This survey is mandatory and must be completed by each participant after the Training Course and it's the only way we can finalize the Final Report. Usually it arrives from this mail EU-CORPORATE-NOTIFICATION-SYSTEM@ec.europa.eu- It won't take you more than 5 minutes. If you have any questions about that, do not hesitate to contact us.

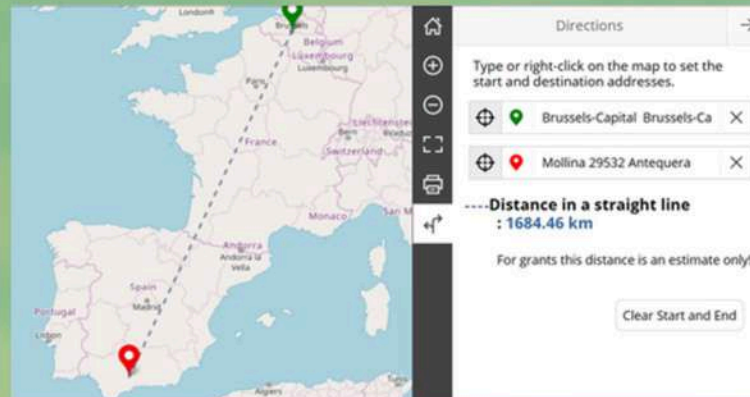
DISSEMINATION is important for our project and its an effort of all of us. You should send us the links of the visibility you made through your website, social media, local newspapers, etc. Publications must include the word ERASMUS+ and the logo.

*Finally, when the indicated actions have been carried out, we will send your NGO the travel cost calculation and proceed with the bank transfer to the NGO corresponding to your travel expenses.

Reimbursement Conditions

To calculate your eligibility for the maximum amount of reimbursement you can receive, please refer to the [Erasmus+ Distance Calculator](#).

- Insert the location of your organization (city) and the final destination, Molina.



- Then apply the distance in kilometers to the following table, and you will see how much money you can possibly receive for your travel reimbursement for one person.

Travel distance	Green travel	Non-Green travel
10 – 99 km	56 EUR	28 EUR
100 – 499 km	285 EUR	211 EUR
500 – 1999 km	417 EUR	309 EUR
2000 – 2999 km	535 EUR	395 EUR
3000 – 3999 km	785 EUR	580 EUR
4000 – 7999 km	1188 EUR	1188 EUR

Important Information to Take into Account

Following the guidelines of the Erasmus+ / YIA Program and internal regulations, the travel must be released by the participants on the direct way within maximum 2 days. In case of long pauses or indirect routes (holiday travel), there is no reimbursement of travel costs!

- NOTE that, except illnesses, you are expected to participate FULLY in all activities.
- Unauthorized absence from activities and workshops is not permitted. If less than 90% of the program is attended, it will not be possible to be reimbursed for the travel costs.
- **Missing or lost tickets will not be reimbursed.**
- Taxi or petrol costs are not reimbursed (ask us before if you would need it).
- **ORIGINAL Boarding passes for all the parts of air-travel are essential for reimbursement.**
- "Booking paper" alone is not enough (invoices are required).
- The documents must be uploaded in original PDF (**screenshots are not allowed!**).

TIP: If you are selected and your flight tickets are approved by us, purchase your tickets directly from the airline's website to ensure you receive original boarding passes and invoices. When purchasing through a phone app, obtaining these documents can be much more complicated.

Travel Instructions

The nearest airports to Mollina are Malaga and Sevilla, but you could also choose Madrid. Before purchasing your flight tickets, please consider the following information based on the airport you arrive at.

If you land at Malaga Airport:

1. Take a Cercanías train (in front of arrivals) called Renfe which will take you to Central Train Station Málaga María Zambrano. Here you go to Malaga Train station and take a bus directly to Mollina.
2. **For now, the option of train from Malaga to Antequera-Santa Ana is not in function.**

If you land at Sevilla Airport:

1. Take and Airport Bus (EA) to the Sevilla – Estación de Autobuses Plaza de Armas. There you take an ALSA bus to Mollina. (duration approx 3–4h)
2. Take a city bus to Sevilla-Santa Justa train station, where you can take a train to Antequera-Santa Ana. **From Antequera-Santa Ana train station, you will need to take a taxi. We'll provide you with more details about this later.** (duration approx 3h)

If you land at Madrid-Barajas Airport:

1. Take a metro to Estación Sur de Autobuses. There you take an ALSA bus to Mollina. (duration approx 5–6h)
2. You can take a Cercanias train or metro to Madrid Atocha Train Station where you can take a train directly to Antequera-Santa Ana. **From Antequera-Santa Ana train station, you will need to take a taxi. We'll provide you with more details about this later.** (duration approx 3,5–4h)

Travel Instructions

The nearest airports to Mollina are Malaga and Sevilla, but you could also choose Madrid. Before purchasing your flight tickets, please consider the following information based on the airport you arrive at.

You should go to Antequera-Santa Ana where you can take a train to Cordoba, Malaga, Sevilla or Madrid.

You should take a bus in Mollina bus station close to the accommodation.

We will help you to book a taxi from venue to the train Station.

If your flight is from Malaga you go from Mollina bus station.

Train Renfe:

<http://www.renfe.com/EN/viajeros/index.html>

Bus Alsa:

<https://www.alsa.com/en>

Please feel free to contact us with any questions
you may have :)

Accommodation and Food

The venue of the project will be in CEULAJ, Mollina. CEULAJ is a Spanish youth center managed by Injuve, serving as a space for education, exchange of experiences, and meetings of youth organizations around the world.



Google maps:
<https://maps.app.goo.gl/TnJtLwhTkDgUuY8Y6>

About the place
<https://ceulaj.injuve.es/index.php/en>



- 1 Rooms made by 4 people with 1 shared bathroom per room.
- 2 Conference Room for workshops is located inside the facility.
- 3 Drinkable water and toilet paper provided all day long.
- 4 Meals (breakfast, lunch, dinner and coffee breaks) are located inside the facility.

Conduct and Accommodation Policy

To ensure a safe, respectful, and conducive learning environment for all participants, it is imperative to adhere to our conduct and accommodation policies throughout the duration of the course:

Alcohol and Prohibited Substances:

In accordance with our rules and the regulations of the public accommodation hosting us, the consumption of alcohol, drugs, or any psychoactive substance on the premises is strictly forbidden.

Our commitment is to provide a safe and healthy space for all participants and staff. Any breach of this policy will result in immediate expulsion from the training course.

Conduct and Accommodation Policy

Expulsion and Refund:

In the event of being expelled for failing to comply with the conduct policies, the **participant will be responsible for organizing and covering their own return travel expenses.** Furthermore, it will not be possible to claim a refund for travel expenses already incurred. This measure is taken to maintain the integrity and values of the Erasmus+ program and ensure a positive and productive experience for all participants.

Respective Environment:

We are committed to creating an environment that supports mutual respect, learning, and personal development. **We expect all participants to contribute to this positive atmosphere by engaging respectfully, supporting each other, and embracing the opportunity for growth.** This ensures that the experience will be both enriching and memorable for all involved.

We appreciate your understanding and cooperation with these policies in advance!



What To Bring?



Generally comfortable clothes for indoor and outdoor activities, shoes for workshops depending on weather, slippers.



Traditional food, drink and souvenirs for intercultural evenings activities.



Any medicaments you use and will be needed for you while staying.



Hygienic set (it is not provided in the hostel). Towels are provided.



At least one laptop per national team in case of need for any workshop.

****If there's any person with special diet/allergies/needs, please inform us about this via the Registration Form (provided by your NGO)***

***It is especially important for us to know about diets/allergies/specials needs
IN ADVANCE***

CONTACT

Project Coordinator in Lithuania

Austeja Amankaviciute

austeja@tavo-europa.eu



Co-funded by
the European Union



Erasmus+



GOBIERNO
DE ESPAÑA

MINISTERIO
DE JUVENTUD
E INFANCIA

injuve



AYUNTAMIENTO DE
PUENTE GENIL



Join with Tavo Europa



Educator Pass 2026. You are welcome to join our new educational programme for 2026!

Dive into non-formal learning exploration for a 75 euro fee that will unlock your potential to join all training courses, professional study visits, events in Lithuania and abroad until the end of the year, and also supports us to find new exciting and exclusive opportunities for community members!

Please do not pay any fee until you receive a confirmation letter to join the programme. If you want to join the project, please fill the application form, whether you have already participated or not.

Bear in mind that Tavo Europa keeps the right to send the most suitable and motivated participants to all of our projects.

For more projects:

Explore the world and learn together with the help of Tavo Europa. Join the group with more opportunities:

<https://www.facebook.com/groups/186132221744993>