

INFO PACK

CEEYOUTH4EU
Capacity Building Incubator



BRUSSELS (BE)



10-14 MAY 2026



Co-funded by the
Erasmus+ Programme
of the European Union



ACCOMMODATION



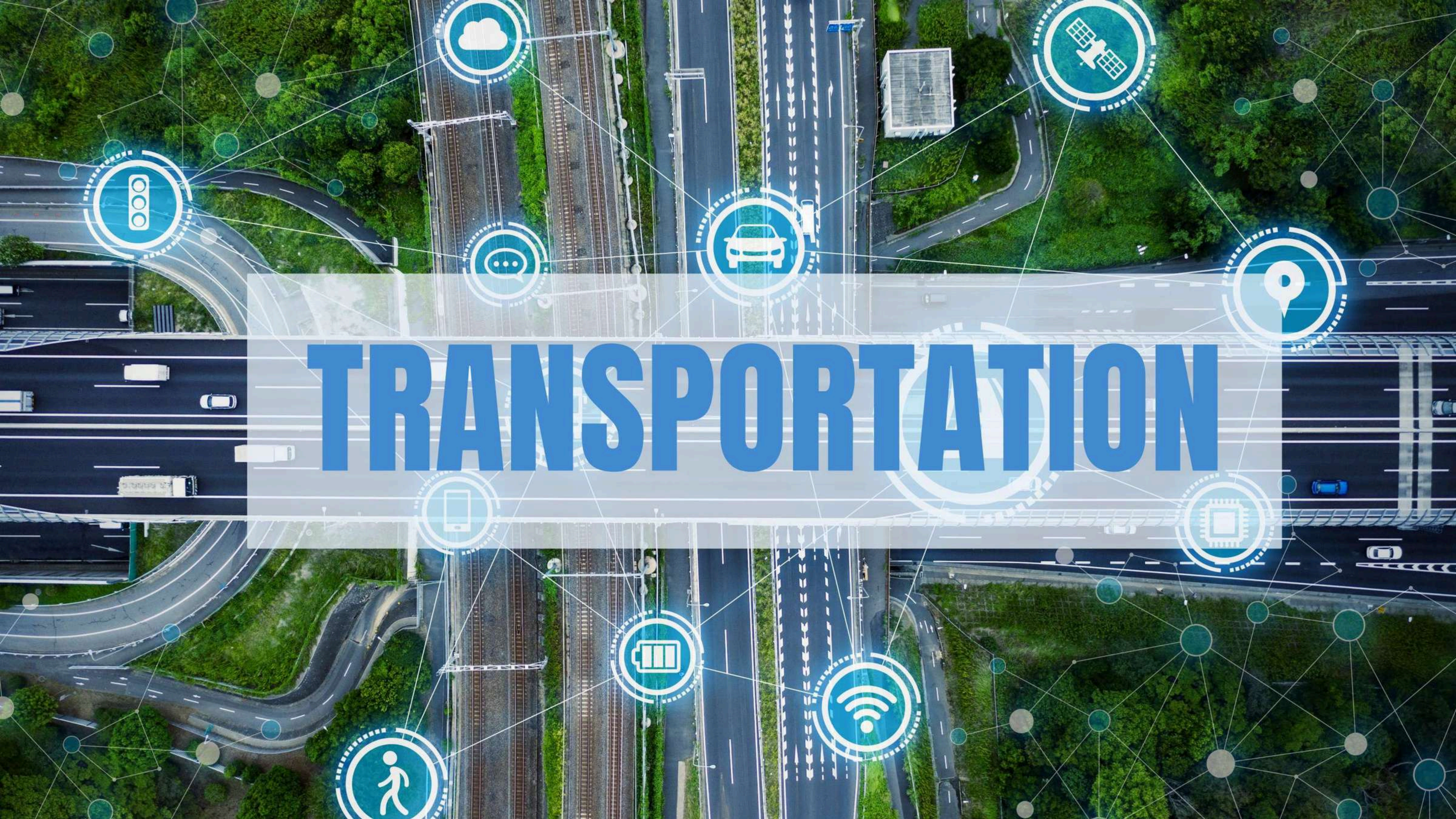
ACCOMMODATION

MEININGER Hotel Bruxelles City Centre

***Breakfast** and **dinner** will be provided at the accommodation for all participants. Please refer to the hostel's schedule for meal times.*



Quai du Hainaut 33, 1080 Brussels, Belgium

An aerial photograph of a complex highway interchange with multiple lanes, overpasses, and ramps. The image is overlaid with a network of white lines and circular nodes, suggesting a digital or smart infrastructure theme. Several blue circular icons are scattered across the scene, representing different aspects of transportation and technology: a cloud, a satellite, a car, a location pin, a battery, a Wi-Fi signal, a person walking, a smartphone, a speech bubble, and a traffic light. A large, semi-transparent white banner is centered horizontally across the image, containing the word "TRANSPORTATION" in a bold, blue, sans-serif font.

TRANSPORTATION

TRANSPORTATION

From Charleroi (CRL)

 *Fibco + Train/Metro (around €20)*

- *Take the Flibco shuttle bus from Charleroi Airport to Brussels-Midi / Bruxelles-Midi station.*
- *From Brussels-Midi, take any metro/train heading to Brussels Central / Bruxelles-Central (3–5 minutes).*
- *Walk 10 minutes to 159–163 Boulevard Anspach.*



TRANSPORTATION

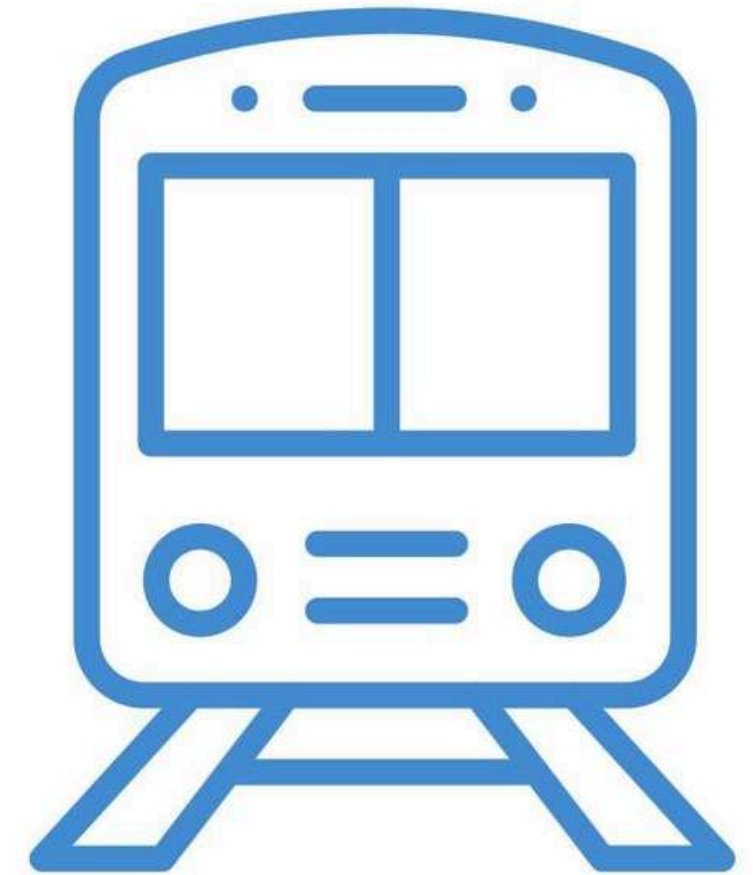
From Zaventem (BRU)

By Train (€13.60)

- Take the IC train directly from the airport.
- Get off at Bruxelles-Central.
- Walk 10 minutes to 159–163 Boulevard Anspach.

By Uber or Taxi (35–50+€)

- Available at the airport exit.
- Price varies depending on traffic and time of day.



INFO: PUBLIC TRANSPORT

- **STIB/MIVB** metro, trams, and buses operate from around **5:00/6:00 to midnight**. Check the last services, as final departures from line terminals start around 12:17 am.
- **Tickets** are available at station machines, kiosks, or via the **STIB/MIVB** app, which also offers real-time schedules and route planning.
- Useful navigation apps include **Google Maps** and **Moovit**, available on both major app stores.





WHAT TO EAT



WHAT TO EAT

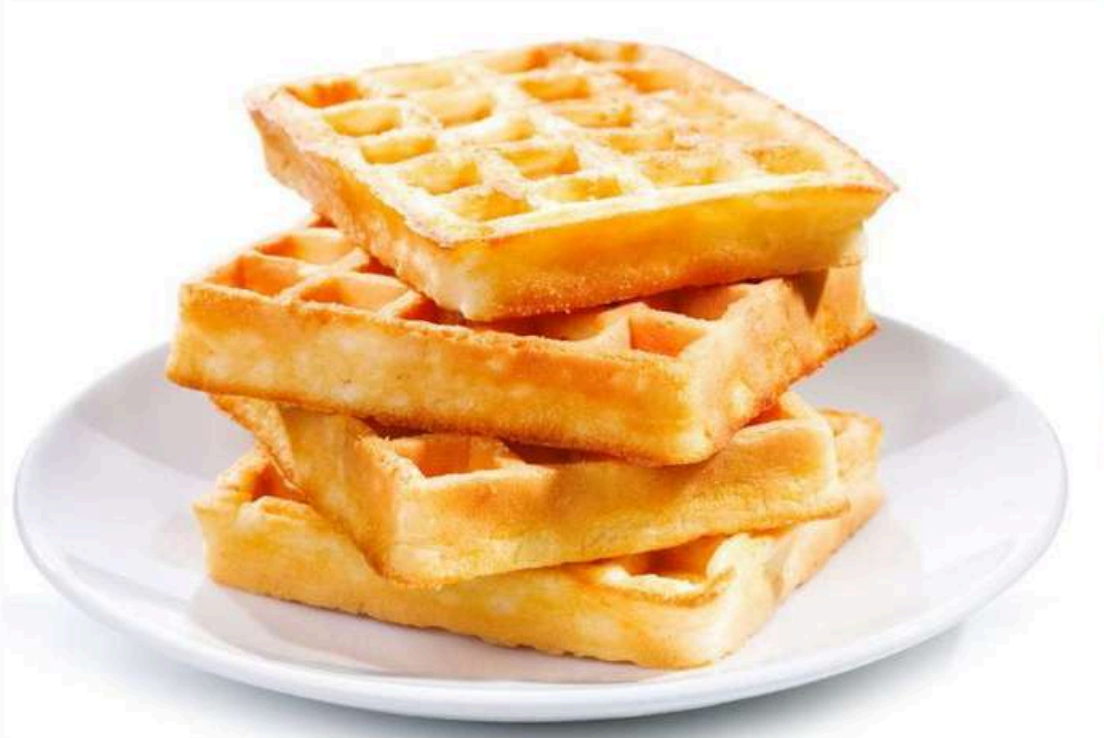


You will find many “*friteries*” where you can taste belgian fries with a sauce of your choice! One of the best places is Maison Antoine in Place Jourdan!

A traditional flavour of belgium, *Speculoos*. You can find it in ice cream, dessert, as waffle topper or simply as a biscuit to go with your coffee.



WHAT TO EAT



You can find a *waffle* shop in every street of the city center, where you will be able to choose one of many topping options: from fruit to chocolate or even ice cream!

Finally, the most typical dish in the Brussels region, *Moules*. This plate combine sea food, stewed with vegetables and various seasonings.





WHAT TO VISIT





ARCHITECTURAL LANDMARKS



ROYAL PALACE



GRAND PALACE



MUSEUMS:



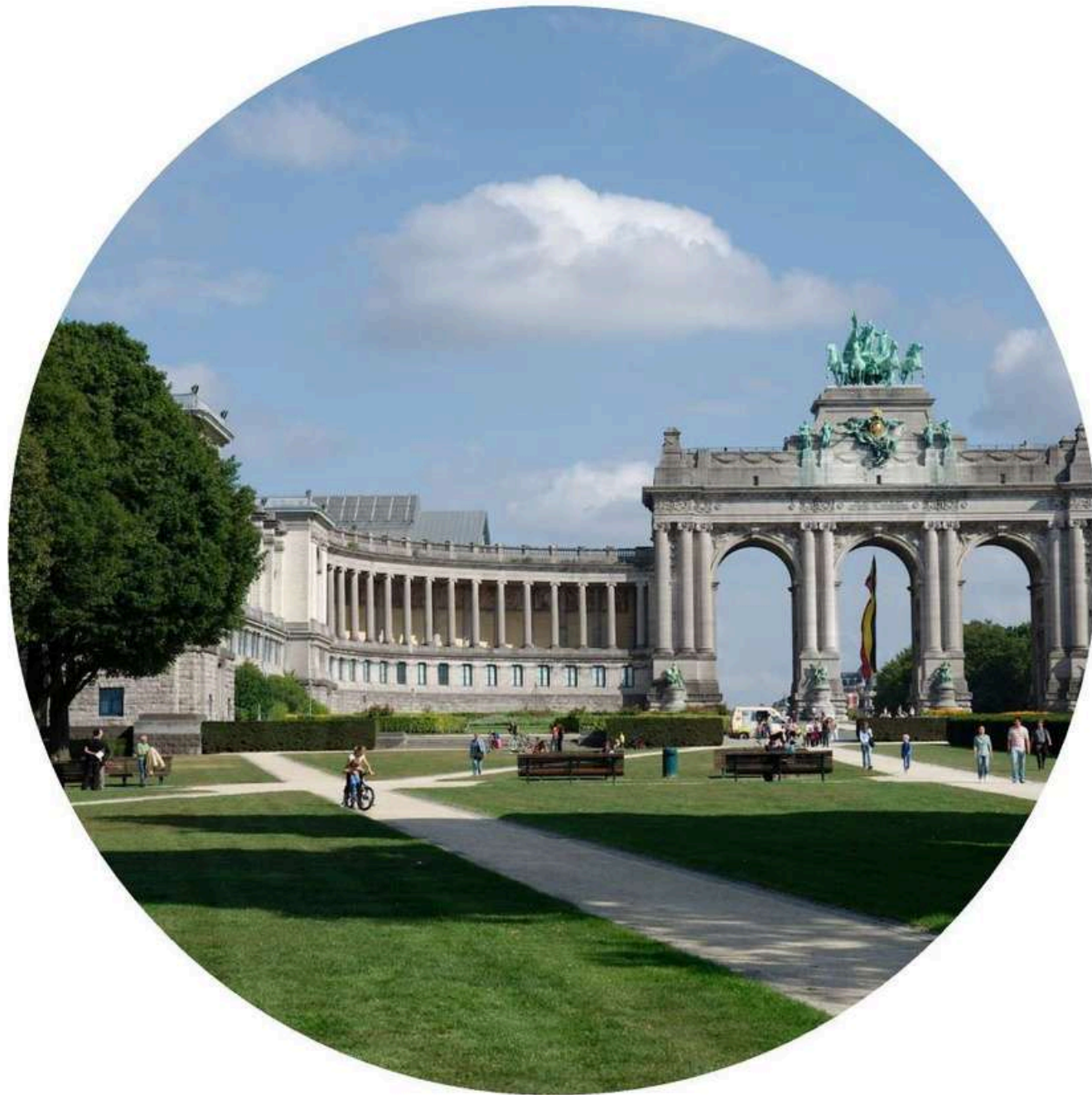
Magritte Museum



Royal Museums of Fine Arts



GREEN ESCAPE



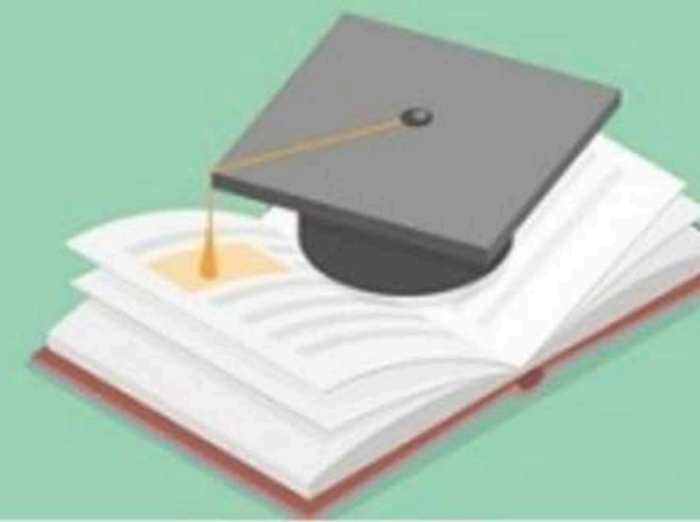
Cinquantenaire Park



Leopold Park



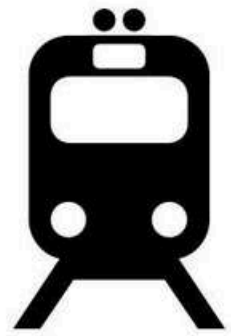
USEFUL TIPS & SAFETY



SAFETY TIPS



- Stay alert in **crowded areas** and keep your belongings secure, as **pickpocketing** can occur in the city centre.



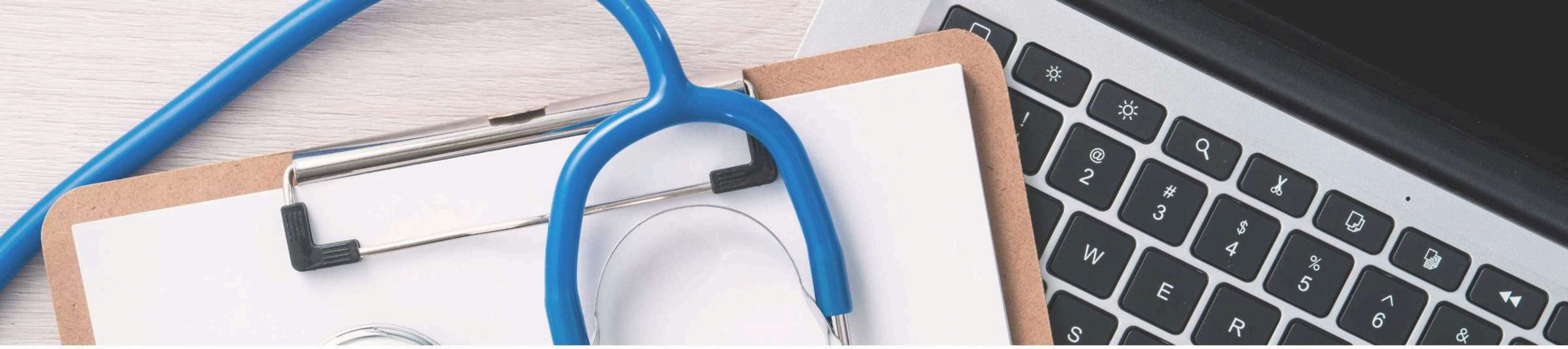
- Avoid isolated areas at night, especially around **Gare du Nord**, **Gare du Midi**, and rely on official transport or taxis.



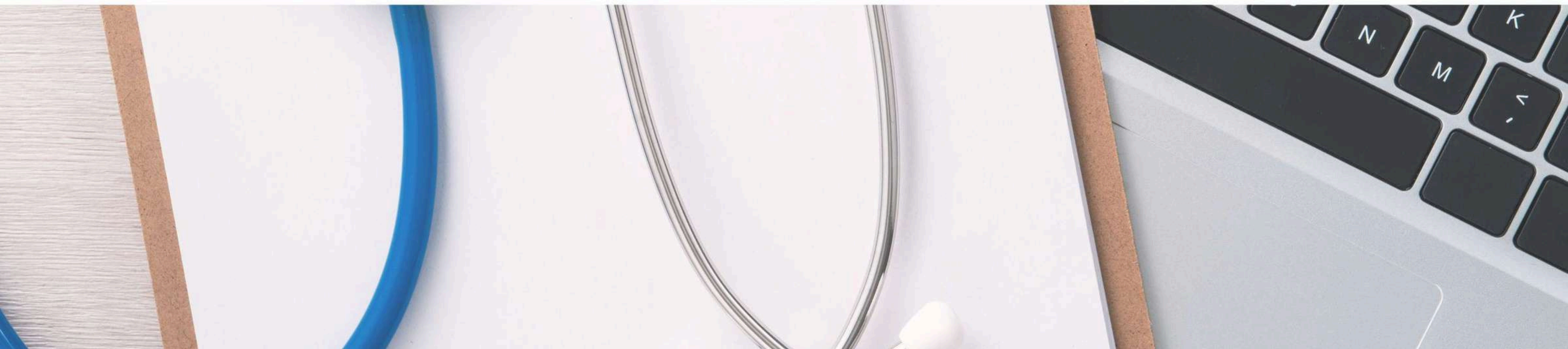
- Keep your **ID** with you; in emergencies, call **112**.



- Weather **changes** quickly, so carry a light jacket or umbrella.



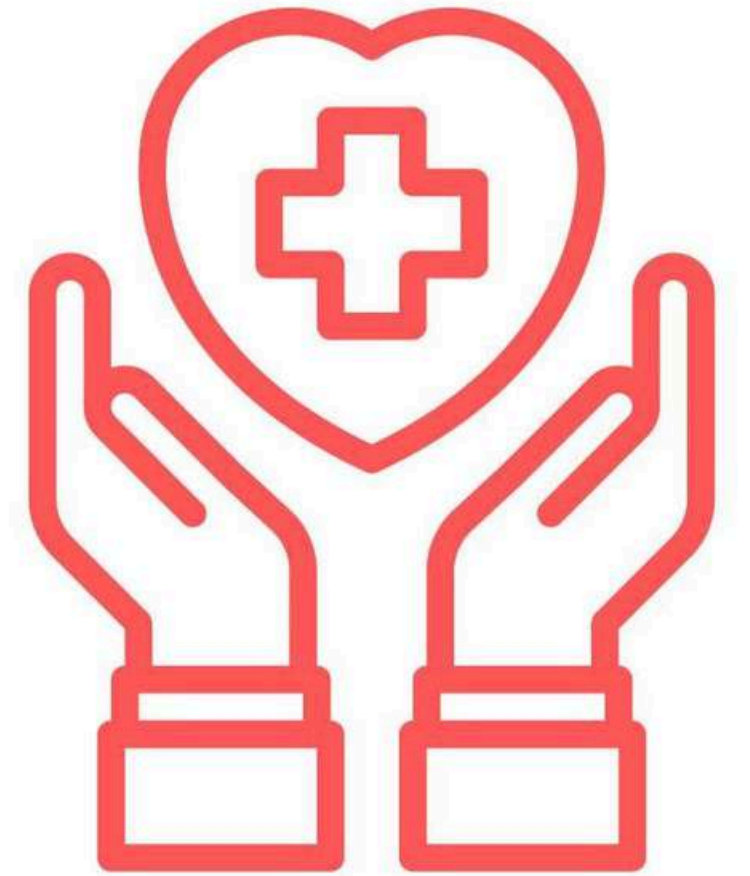
HEALTH



HEALTH

European Health Insurance Card (EHIC)

All participants are reminded to bring their European Health Insurance Card (EHIC). This card is required to access medical services in Belgium if needed during your stay.



A close-up photograph of a person's hand holding a newspaper. The newspaper is slightly out of focus, showing some text and a small image. A white horizontal banner is overlaid across the middle of the image, containing the text 'GENERAL INFO' in a bold, blue, sans-serif font. The background is blurred, suggesting an indoor setting with other people or objects.

GENERAL INFO

ABOUT BRUSSELS

Language:

*Everything is **bilingual** in Brussels!*

Everything, from road signs to advertisements, train announcements, street names and information boards is in French and Dutch, Belgium's two main national languages (German is the third). It can be confusing if you're not used to it.

*On the plus side, Brussels is a **multicultural** city, and you should get by **easily speaking English** during your daily activities.*



Contact Us!



Project Coordinator in Lithuania

Austeja Amankaviciute

austeja@tavo-europa.eu



Co-funded by
the European Union



Join with Tavo Europa

Educator Pass 2026. You are welcome to join our new educational programme for 2026!

Dive into non-formal learning exploration for a 75 euro fee that will unlock your potential to join all training courses, professional study visits, events in Lithuania and abroad until the end of the year, and also supports us to find new exciting and exclusive opportunities for community members!

Please do not pay any fee until you receive a confirmation letter to join the programme. If you want to join the project, please fill the application form, whether you have already participated or not.

Bear in mind that Tavo Europa keeps the right to send the most suitable and motivated participants to all of our projects.

For more projects:

Explore the world and learn together with the help of Tavo Europa. Join the group with more opportunities:

<https://www.facebook.com/groups/186132221744993>



Co-funded by
the European Union

