

FUNDACJA LUMISFERA

ERASMUS+ YOUTH EXCHANGE

ACCESS2SUCCESS

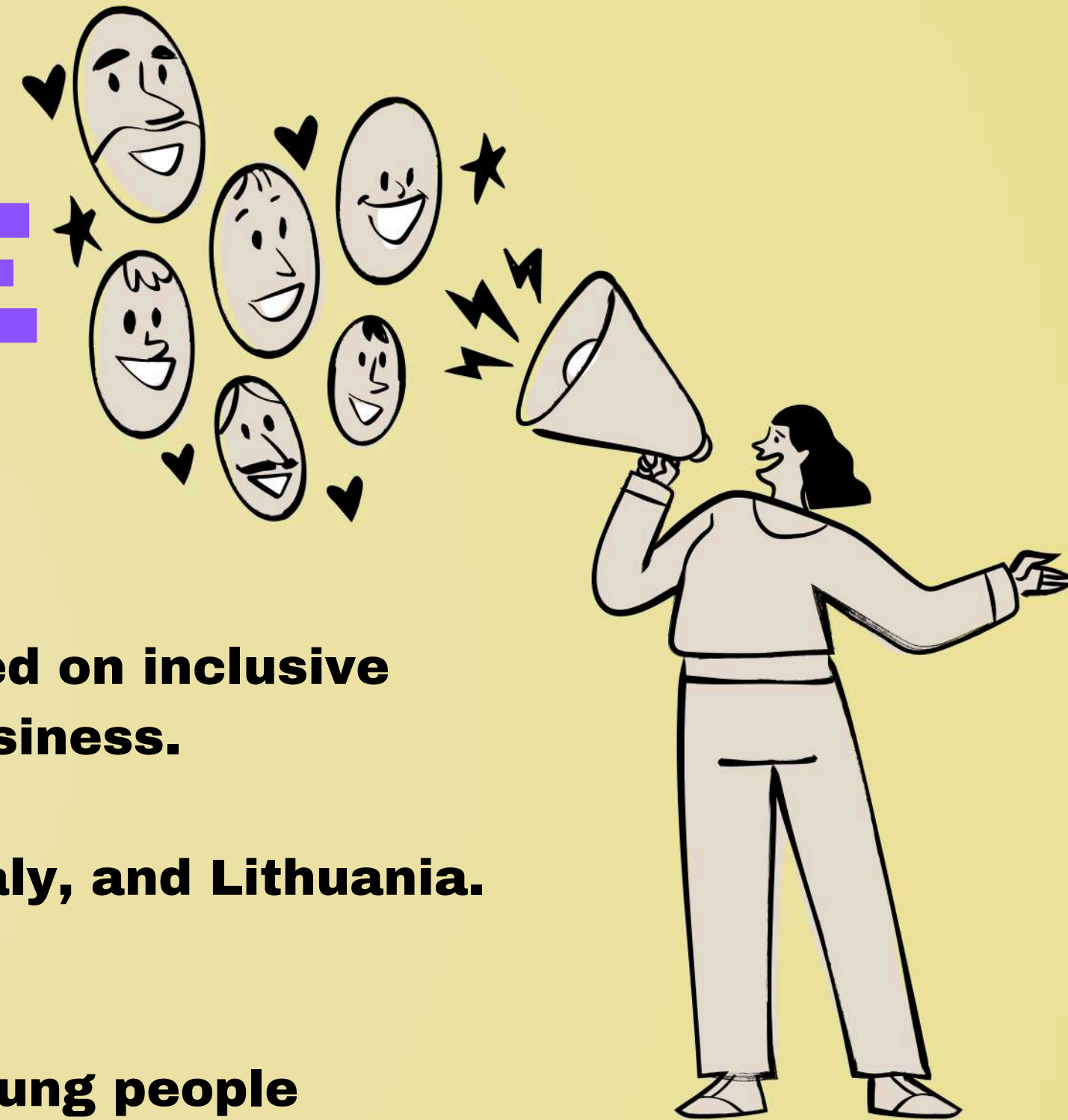
10 - 16 MAY 2026

GRYWAŁD
POLAND



Co-funded by the
European Union

ABOUT THE PROJECT



Access2Success is an international youth exchange focused on inclusive entrepreneurship and the use of artificial intelligence in business.

The project brings together 39 participants from Poland, Italy, and Lithuania.

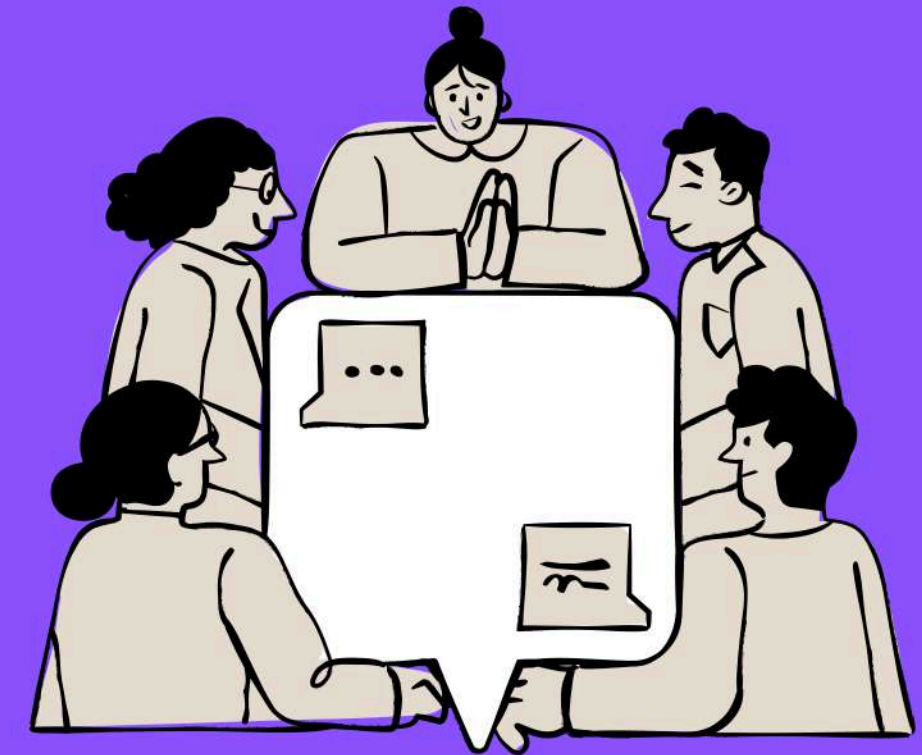
Main project objectives:

- **Development of entrepreneurial competences among young people**
- **Learning to use AI tools in business (Google Cloud AI, AWS AI, OpenAI)**
- **Promoting inclusiveness and equal opportunities for people with disabilities**
- **Cultural exchange and building intercultural competences**
- **Creating an action strategy for inclusive companies**

DETAILS

PROJECT TYPE ERASMUS+ YOUTH EXCHANGE (KA152-YOU)

- **Exchange Dates:** May **10-16, 2026**
- **Participants, 39 people aged 18-27 from: Poland, Lithuania, Italy**
- **Working Language: English**



PARTICIPANTS

- **Each of the three country groups consists of 13 people:**
- **11 participants (including 4 people with disabilities)**
- **1 group leader**
- **1 assistant for people with disabilities**

VENUE



HOTEL PERŁA PIENIN

ADDRESS:

PODZAGONIE 12

34-450 GRYWAŁD, POLAND

ABOUT THE VENUE:

- **PICTURESQUE FACILITY IN THE HEART OF PIENINY MOUNTAINS**
- **PARTICIPANTS WILL BE ACCOMMODATED IN THE ROOMS OF 2-4 PEOPLE, EACH ROOM HAS A PRIVATE BATHROOM.**
- **BEDSHEETS & TOWELS WILL BE PROVIDED.**
- **CONFERENCE AND WORKSHOP ROOMS**
- **ACCESSIBILITY FOR PEOPLE WITH DISABILITIES**
- **FULL BOARD**

LOCATION:

- **~100 KM FROM KRAKÓW**
- **NEAR DUNAJEC RIVER AND PIENINY NATIONAL PARK**

PERLAPIENIN.PL



WHAT TO BRING AND PREPARE?

MANDATORY DOCUMENTS

PLEASE BRING...

- **Comfortable shoes and clothes as we might have some activities outside and do not forget to check the weather before coming.**
- **Personal care products: shampoo, toothpaste, necessary medicine if you require any, etc.**
- **Workshop clothes (loose, comfortable)**
- **At least 1 laptop per country (mandatory for AI workshops!)**
- **For intercultural evenings:**
 - **Food and snacks typical of your country**
 - **Your country flag**
 - **Games and activities**
 - **Interactive activities**

- **ID card or passport**
- **Health insurance covering the full duration of the exchange (EHIC card is NOT enough!)**
- **Project does not have participation fee of any kind due to co-funding received, however, expectation is that each participant contributes and has their own health insurance covering the days of mobility.**
- **Travel tickets**
- **All invoices and receipts (for reimbursement)**

DURING THE EXCHANGE WE WILL CREATE TOGETHER:

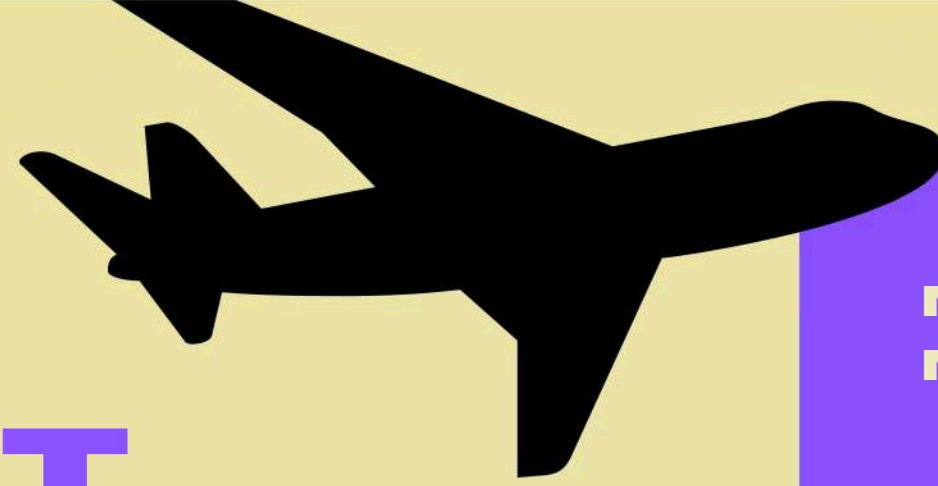
- 1** The main practical result of our work will be **creating a personal Assistant - an innovative tool using artificial intelligence** to support daily professional tasks, with particular attention to the needs of people with disabilities. Our assistant will integrate with popular tools such as Slack and Microsoft Teams and will have text-to-speech and speech-to-text features for increased accessibility.
- 2** We will also develop a comprehensive action strategy for inclusive companies - a **practical guide for employers** showing how to effectively employ and support people with disabilities. We will create an educational board game promoting entrepreneurial attitudes, equipped with special tactile markings and Braille inscriptions, which will be accessible to everyone. Each participant will also work on their own business idea, developing concrete entrepreneurial projects.
- 3** The entire exchange process will be **documented in a documentary film** that will tell the story of our project and show how we broke down barriers together. We will also prepare a publication summarizing our experiences, conclusions, and best practices from the project.

TOGETHER, WE CREATE A GOOD PLACE TO WORK.

AFTER THE EXCHANGE

- **Webinar Series:** We will organize a series of webinars to share the knowledge and experiences gained during the project, as well as to present the outcomes of our work to local communities.
- **3 Workshops:** Each partner organization will conduct a minimum of three entrepreneurship workshops at high schools or universities within their respective countries to disseminate the acquired knowledge.
- **Online Campaign:** We will launch an online campaign aimed at promoting entrepreneurship among individuals with disabilities.
- **Final Conference:** The project will conclude with an online conference in August 2026, serving as a platform to present all our deliverables and the final report. We will invite representatives from companies that employ individuals with disabilities.
- **Global Entrepreneurship Week:** Furthermore, we will actively participate in Global Entrepreneurship Week in November 2026, promoting our educational game and the principles of inclusive entrepreneurship.
[Polish Group]

Continuous Implementation: All our initiatives will be sustained by integrating the acquired knowledge into our organizations, leveraging AI tools in our daily operations, and applying inclusive corporate strategies.



IMPORTANT TRAVELING INFORMATION!

GETTING TO THE VENUE:

WE SUGGEST CHECKING FLIGHTS TO KRAKÓW BALICE AIRPORT (KRK), WHICH IS THE NEAREST AIRPORT TO THE EXCHANGE VENUE. EXPERIENCE SHOWS THAT REIMBURSEMENT ALLOWANCES ARE SUFFICIENT TO COVER YOUR TRAVEL AND LOCAL TRANSPORTATION IF EVERYTHING IS BOOKED IN ADVANCE.

ARRIVAL AND DEPARTURE DATES:

- **ARRIVAL: MAY 10, 2026 (SUNDAY)**
- **DEPARTURE: MAY 16, 2026 (SATURDAY)**

PARTICIPANTS ARRIVING ON MAY 11 WILL GET DINNER (AROUND 7:30 PM). PARTICIPANTS DEPARTING ON MAY 17 WILL LEAVE THE VENUE AFTER BREAKFAST (BY 10 AM). IMPORTANT - BEFORE BUYING ANY TICKETS: BEFORE BUYING ANY TICKETS, PARTICIPANTS MUST GET CONFIRMATION FROM FUNDACJA LUMISFERA (COORDINATING ORGANIZATION). TICKETS NOT APPROVED BY THE HOST ORGANISATION WILL NOT BE REIMBURSED.

MAXIMUM TRAVEL BUDGET FOR YOUTH MOBILITY:

POLAND (10-99 KM): 56 EUR PER PERSON
GREEN TRAVEL MANDATORY - BUS/TRAIN ONLY

LITHUANIA & ITALY (500-1999 KM):
309 EUR PER PERSON

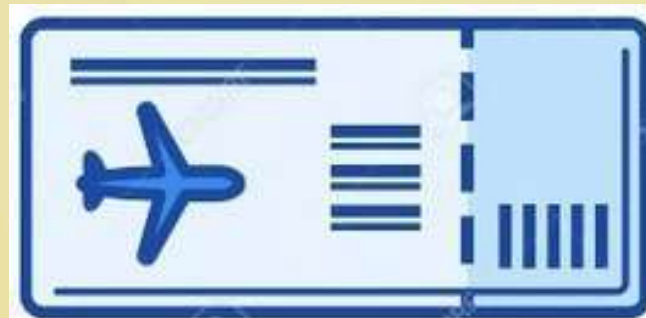
TRANSFER FROM AIRPORT: TRANSFER FROM KRAKÓW BALICE AIRPORT TO THE HOTEL IN GRYWAŁD WILL BE ORGANIZED FOR INTERNATIONAL GROUPS.

DETAILS REGARDING PICKUP TIMES WILL BE PROVIDED AFTER TICKET CONFIRMATION.

CONTACT BEFORE TRAVEL: CONTACT YOUR GROUP LEADER AT LEAST ONE WEEK BEFORE DEPARTURE TO CONFIRM TRAVEL DETAILS AND ARRANGE A COMMON MEETING POINT (IF APPLICABLE).

REIMBURSEMENT PROCEDURE

PARTICIPANTS WILL BE ELIGIBLE TO GET REIMBURSEMENT ONLY IF THEY PROVIDE ORIGINAL TICKETS, INVOICES, BOARDING PASSES AND RECEIPTS. PARTICIPANTS MUST USE PUBLIC TRANSPORT, ECONOMY CLASS. TAXI WILL NOT BE REIMBURSED IN ANY CIRCUMSTANCES! PLEASE KEEP ALL YOUR TICKETS AND BOARDING PASSES AS WITHOUT THEM WE CAN'T REIMBURSE YOU THE MONEY!! AFTER GOING BACK HOME YOU SHOULD SEND US ORIGINAL REMAINING BOARDING PASSES AND ANY OTHER TRAVEL DOCUMENTS FROM RETURN JOURNEY BY POST TO ORGANIZER ADDRESS.



THE REIMBURSEMENT WILL BE DONE BY BANK TRANSFER TO THE ACCOUNT OF PARTNER NGO AFTER THE PROJECT ONCE WE RECEIVE REST FUNDS FROM NATIONAL AGENCY (USUALLY UP TO 3-4 MONTHS). PARTNER NGO IS IN CHARGE TO DISTRIBUTE THE REIMBURSEMENT, SEND BY ORGANIZER, TO THEIR PARTICIPANTS.

ADDITIONAL INFORMATION

INSURANCE: EACH PARTICIPANT MUST HAVE VALID HEALTH INSURANCE THROUGHOUT THE PROJECT. EHC IS NOT ENOUGH!

WEATHER: MAY IN PIENINY: 10-20°C. BRING A RAINCOAT AND LAYERED CLOTHING.

CURRENCY: POLISH ZŁOTY (PLN). 1 EUR ≈ 4.30 PLN.

CARD PAYMENTS ACCEPTED, BUT BRING SOME CASH.

EMERGENCY NUMBERS IN POLAND:

- **EMERGENCY: 112**

CONTACT US!



Project Coordinator in Lithuania

Austeja Amankaviciute

austeja@tavo-europa.eu



Co-funded by
the European Union



JOIN WITH TAVO EUROPA

Explorer Pass 2026. You are welcome to join our new educational programme for 2026!

Dive into non-formal learning exploration for a 75 euro fee that will unlock your potential to join all training courses, professional study visits, events in Lithuania and abroad until the end of the year, and also supports us to find new exciting and exclusive opportunities for community members!

Please do not pay any fee until you receive a confirmation letter to join the programme. If you want to join the project, please fill the application form, whether you have already participated or not.

Bear in mind that Tavo Europa keeps the right to send the most suitable and motivated participants to all of our projects.

For more projects:

Explore the world and learn together with the help of Tavo Europa.

Join the group with more opportunities:

<https://www.facebook.com/groups/186132221744993>



Co-funded by
the European Union

