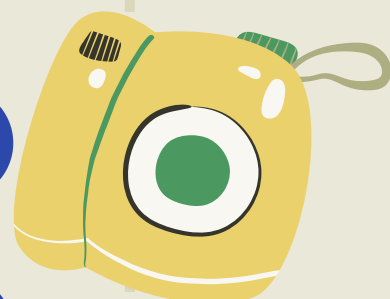




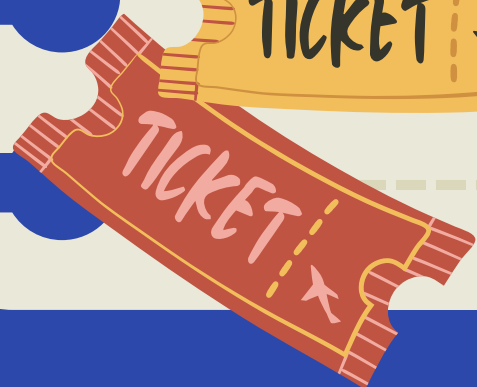
CRISTEEL



EUROPE DIRECT
Lorraine Grand Est



EUROPE DIRECT LORRAINE GRAND EST



About us



Created in 2000, the Regional Inter-associative and Technical Support Centre for European Exchanges in Lorraine has been awarded the Centre Europe Direct Lorraine Grand Est label for the period 2021–2025 and the following, 2026–2030.

Our missions are to bring Europe to life, raise awareness on European citizenship and promote EU-related opportunities.



Our activities

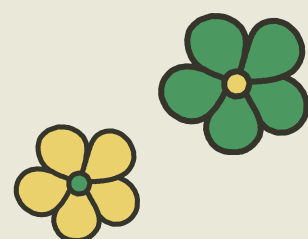


Inform

European citizens by providing online resources and documents, organising meetings and events.

Faciliate

projects and contacts with European partners, supporting young people in their mobility project.



Train

Lorraine citizens and actors about European structures and people on specific programs (Erasmust+, ESC)

Animate

Interventions in schools, universities and youth structures, mobility and information meetings adapted to all audiences

Promoting mobility

Information about ESC, sending of volunteers, sending technical support to structures, project coordination

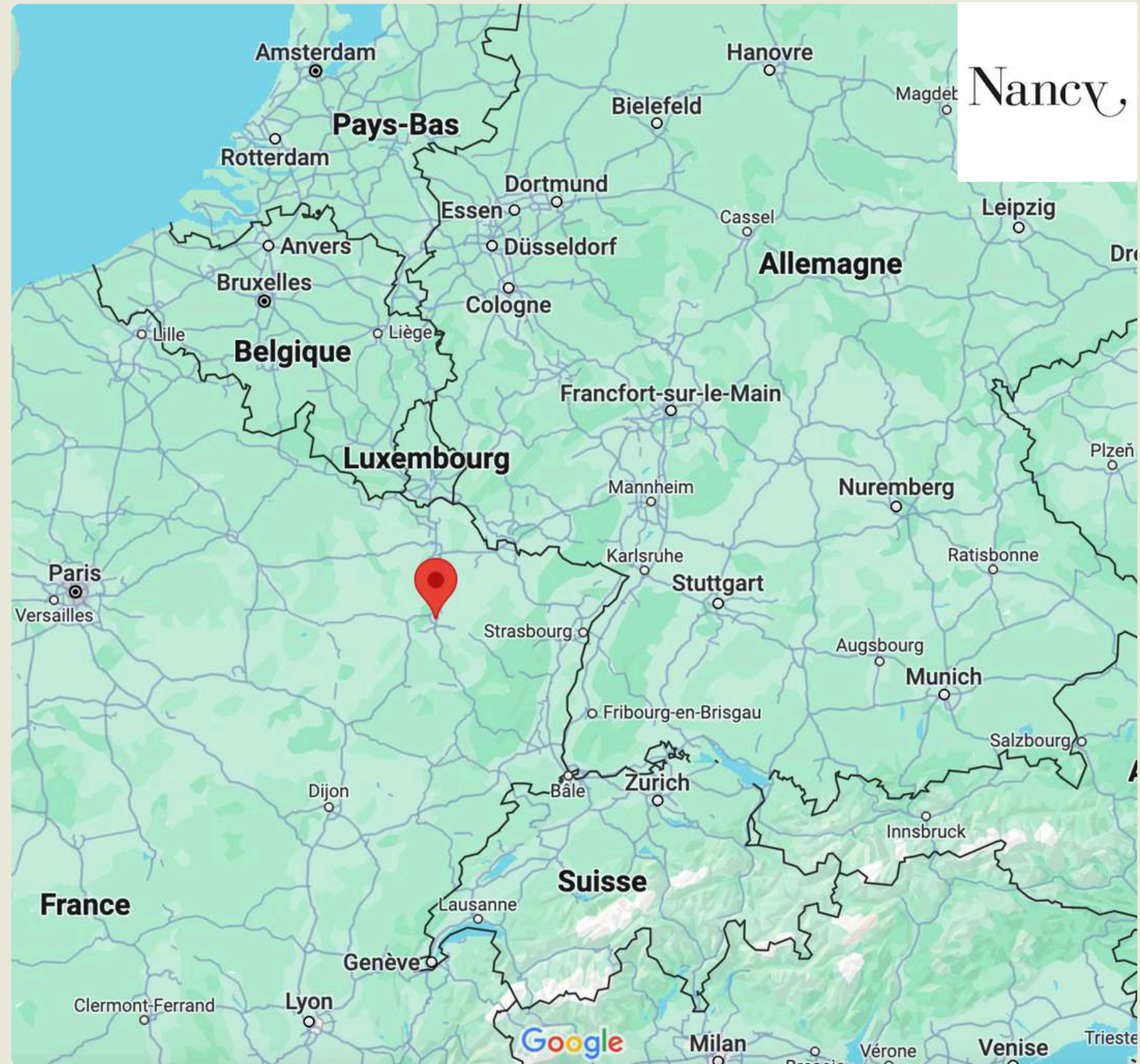
Develop

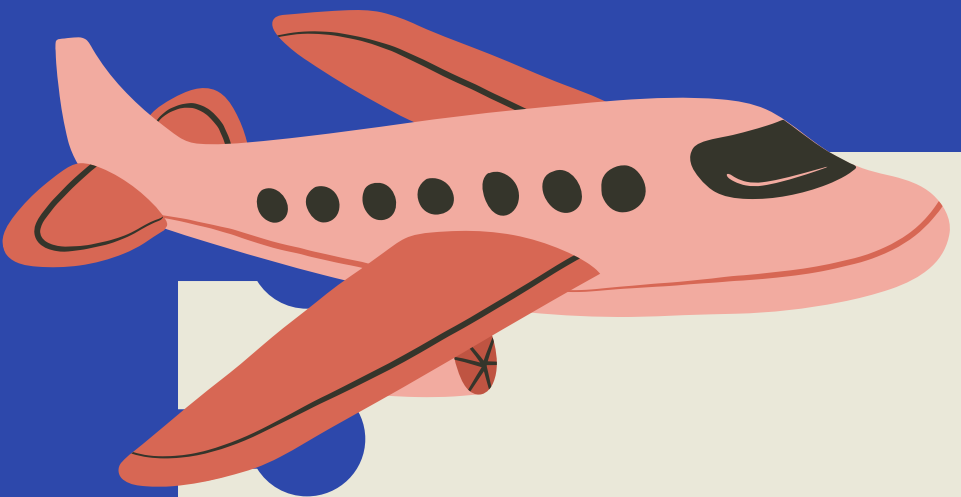
European projects of local organizations and a network of European and Non-European actors in Lorraine





Location of Nancy in France and in Europe





NANCY

Metz

40 min

- Cathedral of Metz
- Church "Temple Neuf"
- Centre Pompidou

Luxembourg

1h30

- Grand Ducal Palace
- Grund district
- Path of the Corniche

Strasbourg

1h45

- Capital of the EU
- Christmas Markets

Germany

2h

- Saarbrücken
- Trier
- Europapark

Reims

2h

- Notre-Dame Cathedral
- "Grandes maisons" of the Champagne

Paris

1h30

- Eiffel Tower
- Notre Dame of Paris
- Arc of triumph
- Louvre
- Galeries Lafayette
- Sacré Cœur

Vosges

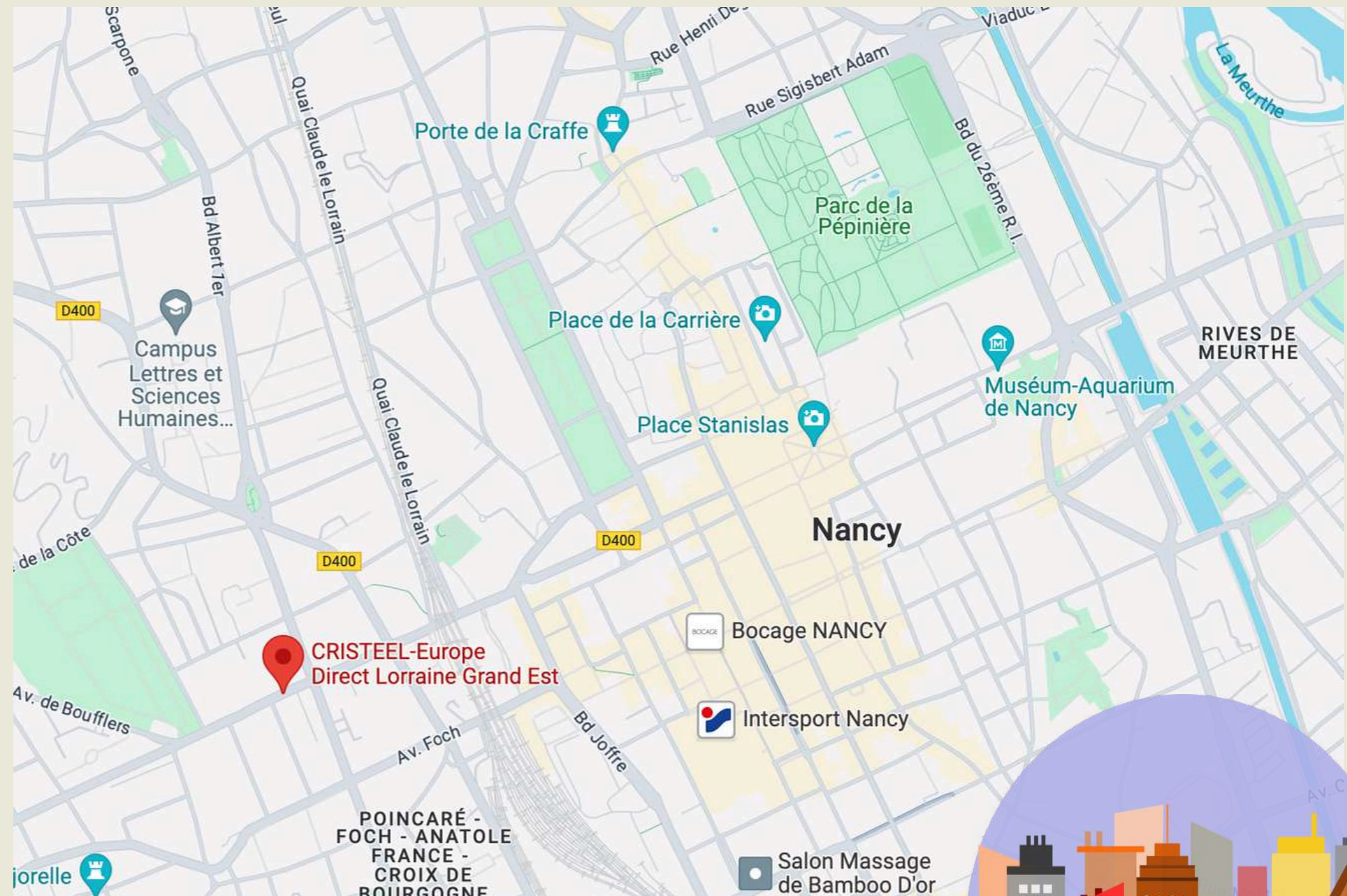
1h30

- Hiking routes
- Lake Gérardmer
- La Bresse

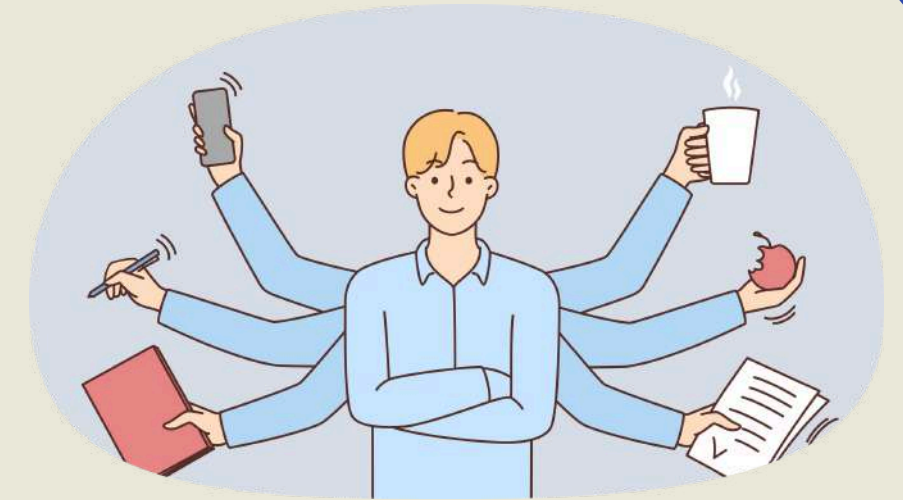


Location of CRISTEEL - EUROPE DIRECT

58 bis rue Raymond Poincaré
54000 Nancy



Your missions



- To accompany interventions in schools, universities and on big events
- To animate the exchanges and/or discussions with the public
- To help organize events
- To help manage our social media accounts as well as our website by creating posts and writing articles about our events or the latest European news
- To create audiovisual content
- To promote mobility



Working conditions & environment

- **5 days of work** per week (30 hours) in company of a cheerful, motivated + dynamic team (9 am to 5 pm)
 - **2 days off** per week : weekend
- > depending on the activity or event we may have
- **2 days of paid leave** per month



Alice Rossel

Europe Direct Projects Officers



Adam Bailly



Roxane Ledard

Coordinator



Tilelli Aguenau

International Projects Officer



Budget and Accommodation



Budget

8€ for food per day*

8€ pocket money per day*

--> 480€ per month

*weekends and bank holidays included

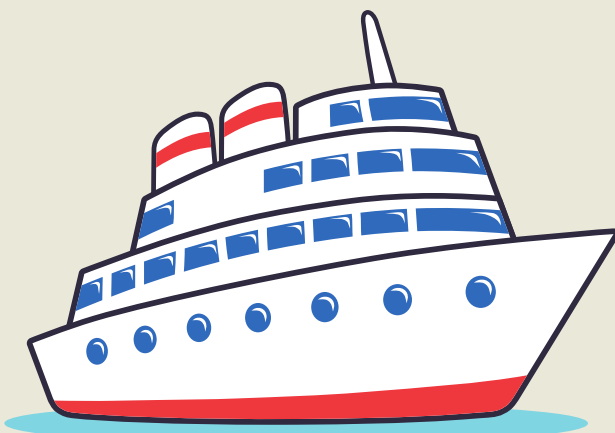


Accommodation

organized and payed by CRISTEEL

- can be a small studio, a shared flat, a student residency, etc.

Budget and Accommodation



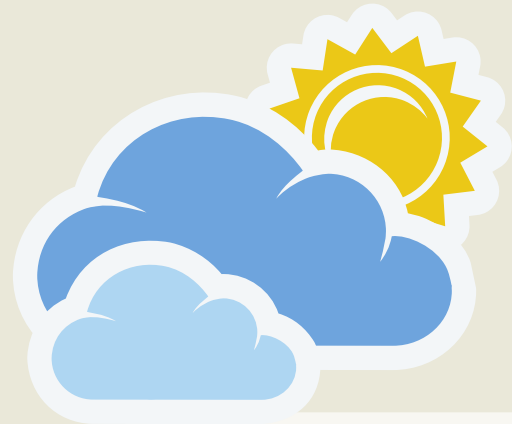
What are the financial conditions?

- travel cost included
- accommodation included
- commuting (bus, tram) included
- language support included

Green travel

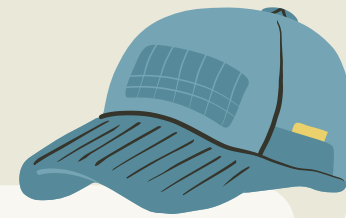


Weather in Nancy



Spring

- changeable
- cold/ warm
- umbrella + sunscreen needed!



Summer

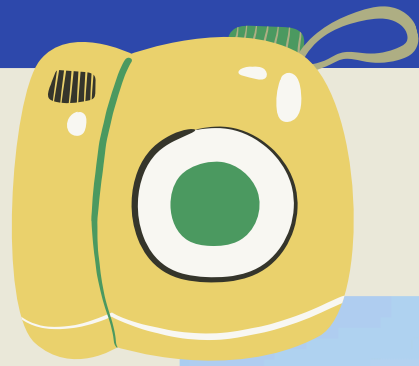
- warm
- dry air
- sun protection needed!



Winter

- long (Nov.-Feb.)
- cold (10 to -10°C)
- warm clothes needed!





History of Nancy

Nancy is located in the North-East of France.

It is a historic and cultural city marked by the legacy of Dukes of Lorraine, notably with the magnificent Stanislas Square, a UNESCO World Heritage.

In the early 20th century, Nancy became a centre of the **Art Nouveau** movement thanks to the École de Nancy.

Nancy is a vibrant student city with a population of over 50,000, primarily due to the University of Lorraine. This student presence enlivens the city, enriching its cultural and social life. Thus, Nancy combines a rich historical heritage with contemporary vitality, making it an attractive and lovely place to live.



What you can do in Nancy

Culture and Heritage

- Place Stanislas
- Musée des Beaux-Arts de Nancy
- Musée de l'École de Nancy
- Musée Lorrain
- Basilique Saint-Epvre
- Porte de la Craffe



Entertainment

- Opéra National de Lorraine
- Caméo Saint-Sébastien (movie theater)
- Théâtre de la Manufacture
- Mall Saint-Sébastien
- Rue Saint-Jean
- L'Autre Canal

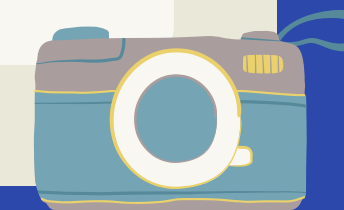
Nature and sport activities

- Parc de la Pépinière
- Jardin Botanique Jean-Marie Pelt
- Grand Nancy Thermal



Events and festivals

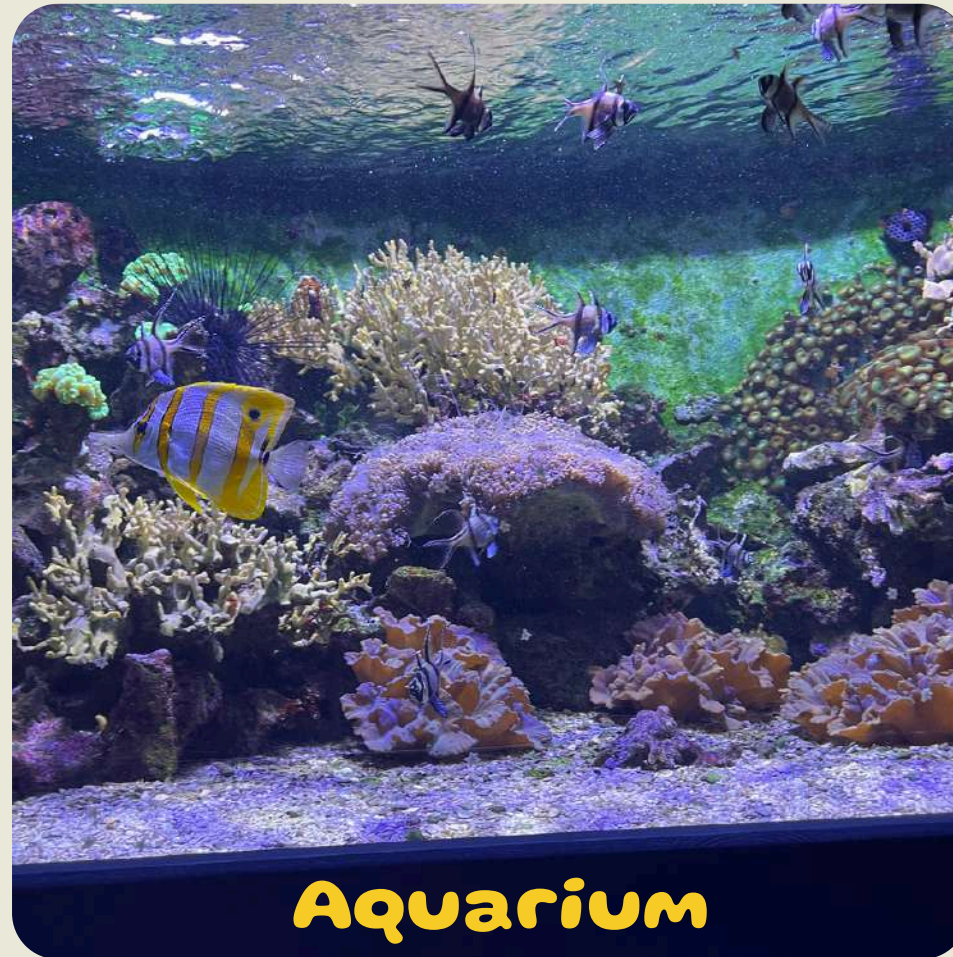
- Le Livre sur la Place
- Nancy Jazz Pulsations



Best spots in Nancy



Place Stanislas



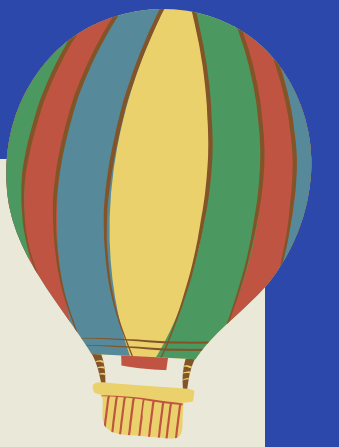
Aquarium



Parc de la Pépinière



Best spots in Nancy



Basilique Saint-Epvre



Macarons de Nancy



Porte de la Craffe



ESN Nancy



Erasmus Student Network Nancy is a non-profit-making international student association. Their mission is to welcome and integrate international students in Nancy, and to raise awareness of international mobility among young people.

You can join their events and make new friends from all over Europe!

Find a buddy system and check out their instagram account to start connecting!





ESN Nancy





Langues courses



You don't need to have a very good knowledge of French to start working at CRISTEEL but if you know some basic vocabs already or if you speak English, Italian, Spanish or German, this would be helpful!



To improve your language skills, CRISTEEL offers you the opportunity to learn French with the help of a native speaker in a small group of other volunteers for free.

Different ways to learn foreign languages

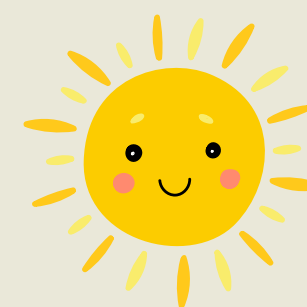


- ESN (Erasmus Student Network)
- PUB Mac Carthy
- Maison de l'étudiant
- Bibliothèque américaine
- Do You speak Jeun'est
- Eu Academy
- Blabla language





Vanessa's testimony



Vanessa, our Sardinian volunteer in action

"I decided to go abroad because I wanted to challenge myself. It was my dream to learn new languages, discover new cultures and get to know new people. My project at CRISTEEL is a great opportunity to develop new competences in communication and European mobility. Thanks to Scambieuropei, an Italian association, I got information about the CES that I'm glad to be doing here in Nancy."

Find more [testimonies](#) on our website!

★ other testimonials



Hi! We are Elena and Meri. We both arrived in October 2025 and we will stay until July 2026. We decided to go abroad for similar reasons like travelling, making new experiences abroad and facing new challenges. At the same time we had the opportunity to gain new skills and to learn much more about ourselves.

We really liked working in Cristeel due to the work's dynamism and the very kind team.

Additionally we love Nancy and we think that it's the perfect option for a youngster, thanks to its liveliness.

We are deeply thankful and grateful for this experience that will travel with us through our next adventures.



Find more [testimonies](#) on our website!

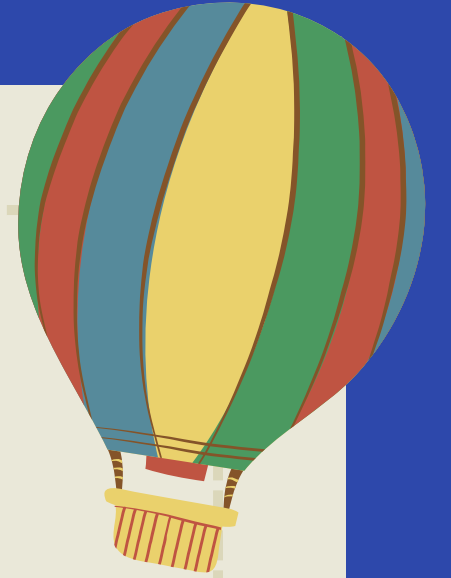
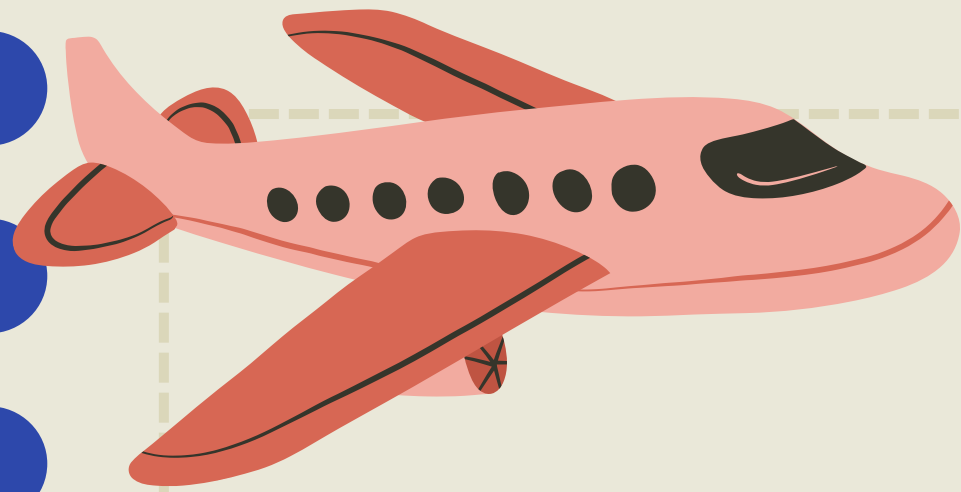
Jean François' testimony

"I decided to do an ESC to see whether I'd like to work with children and to improve my English skills. I had some difficulties at the beginning but there was always someone I could ask if I didn't understand everything immediately. I'm very happy to be in Sighisoara where I work and live together with 19 other European volunteers. We prepare worcamps for the children, give English classes to older people and created a board game. I did the design."

Find more [testimonies](#) on our website!

"In contrast to the other volunteers, I'm in close contact with my sending organization, so CRISTEEL. Yanis arranges regular online-meetings, which is a great thing. I even decided to stay here for another 6 months to perfect my English and because I prefer life here than back home."





Contact us

& get more information



58 bis rue Raymond Poincaré
54000 Nancy



• contact@cristeel.fr (coordinator)



• (+33)9.54.58.57.83 (office number)



www.cristeel.fr



9 am to 5 pm



