



iasis

STAKEHOLDERS CONFERENCE

15-19 SEPTEMBER, 2026

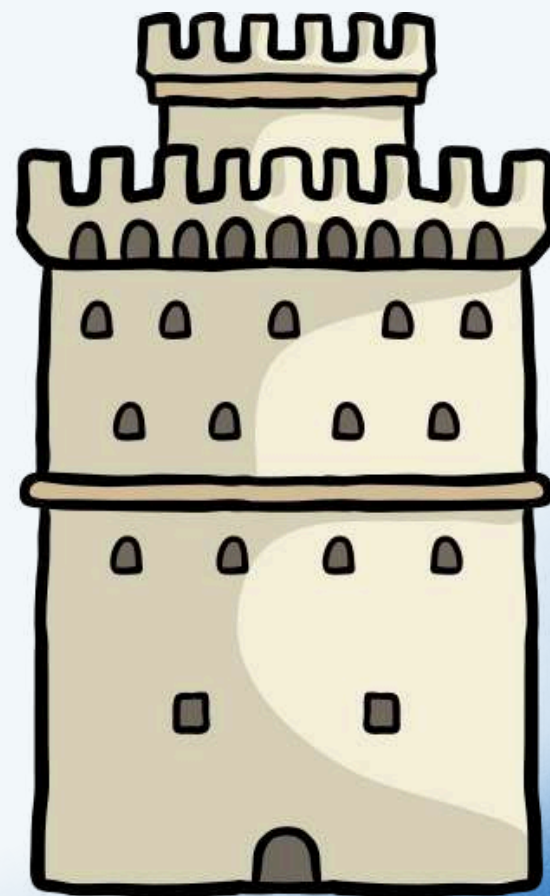
THESSALONIKI INFOPACK



**Emerging
Advanced
Skills
Youth**

WELCOME TO THESSALONIKI, GREECE

**GREECE'S SECOND LARGEST CITY.
A 2,300-YEAR-OLD TREASURE.**



THE EASY PROJECT & OUR JOURNEY SO FAR



The EASY Project is a KA2 Erasmus+ Project dedicated to strengthening youth employability across Europe.

By bringing together organisations with complementary expertise, the project has developed innovative learning resources, practical tools and training opportunities that empower both young people and youth workers.

Throughout the project, partners have collaborated to identify emerging labour market needs, enhance key employability competences and promote inclusive pathways towards education and employment.

Together, we have achieved:

- ✓ Employability Roadmap
- ✓ Capacity Building Programme for Youth Workers
- ✓ Skills Building Academy for Young People
- ✓ Learning Platform & Training Library
- ✓ Employment Toolkit & Practical Resources
- ✓ Policy Recommendations for Future Action
- ✓ Strong European Network for Knowledge Exchange

ABOUT THE CONFERENCE & THE FINAL MEETING

- The Final Stakeholders Conference bring together project partners and local stakeholders to celebrate the completion of the EASY Project. 5 people from each country will attend the event, for a total of 25 participants.
- The event will provide an opportunity to present the project's results, exchange experiences, strengthen partnerships and discuss the future sustainability and impact of the EASY outcomes.

■ Partners of the Project:



GOING TO THESSALONIKI

Participants will travel together from Vilnius to Thessaloniki following a coordinated itinerary

1) The group will depart from **Vilnius by van** on 14 September at approximately 21:30–22:00, travelling together to Warsaw Airport.

2) Participants will then take a **direct flight from Warsaw to Thessaloniki** departing at 06:15 AM and arriving at 09:30 AM. This itinerary has been selected to ensure an efficient and affordable journey for all participants.

Once you receive confirmation of your participation, ensure that the flight booked corresponds to the itinerary presented below.

Departure flight: 15/09

06:15	2h 15m		09:30
WMI	Direct		SKG
<hr/>			
1 	0 	0 	✓ Verified by Ryanair



**only large cabin bags
will be refunded**

GETTING BACK TO LITHUANIA

3) At the end of the project, participants will return to Lithuania following the same coordinated travel plan.

The group will travel **from Thessaloniki to Warsaw by direct flight on 19 September**, departing at 10:00 AM and arriving at 11:20 AM.

4) Upon arrival in Warsaw, **participants will continue the journey together by van back to Vilnius.**

One participant will be designated as the driver for the return trip, ensuring a safe and organised transfer for the entire group.

Once you receive confirmation of your participation, ensure that the flight booked corresponds to the itinerary presented below.

Return flight: 19/09

10:00 SKG ————— 2h 20m Direct ————— 11:20 WMI

1 | 0 | 0 | 0 | Verified by Ryanair

The image shows a flight itinerary for a direct flight from SKG to WMI on 19/09. The flight duration is 2h 20m. The flight is operated by Ryanair, as indicated by the harp logo and the 'Verified by Ryanair' badge. The itinerary also shows a baggage allowance of 1 checked bag, 0 cabin bags, and 0 extra baggage.

Traveling by Van



Perhaps you have more questions about the trip.

Please read this section carefully and feel free to contact us if you need any clarifications.

Participants will travel by the organization's vehicle.

The trip will begin on the 14/09/2026 Vilnius.

You are expected to arrive on the 15/09/2026 at Warsaw airport around 4.00 a.m., in time to get the Flight at 6.15 am.

The trip back will be organized in the same way.

We expect you to be back in Lithuania by the 19/09/2026_

Participants will be driving the vehicle during the returning trip.

You will need to pay for diesel and road taxes during the trip.

These **expenses will be reimbursed** after you return home and **present all original invoices.**

Before departure, all participants must sign the rules for using the vehicle.

Each invoice must include the following organization details:

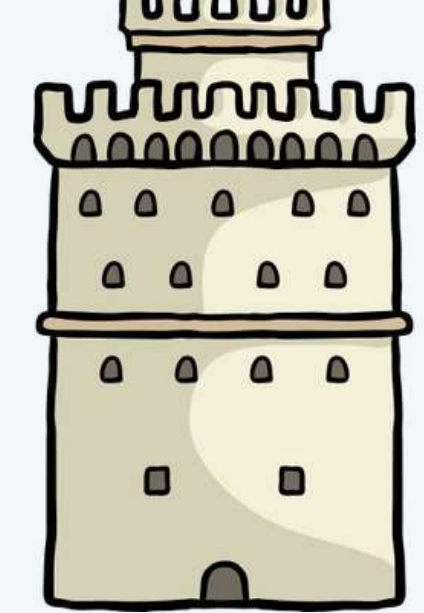
Tavo Europa

Mozuriskiu g. 17-8

LT-06298 Vilnius

Registration Code: 304638334

What to expect:



During the Stay in Thessaloniki

You will have free time to explore Thessaloniki and enjoy the city on **15 and 18**.

On **16 and 17**, all participants are expected to attend the **Stakeholder Conference on Youth Employability in Europe**.

The conference will provide an opportunity to present the results of the EASY project, share experiences and good practices, strengthen existing partnerships, and discuss the long-term sustainability and impact of the project outcomes. A detailed agenda will be shared closer to the event.

Meals on **16 and 17** will be covered by the organisers.

On **15 and 18**, participants will be responsible for their own food-related expenses.

Before the Event

Prior to the conference, participants will be asked to take part in a short online preparatory meeting. The session will last approximately **60–90 minutes**, and the exact date and time will be agreed upon together with the selected participants.

THE NEW THESSALONIKI METRO

NEW!

GREECE'S FIRST FULLY AUTOMATED METRO!

🚆 Stations(Line 1): 13

🎫 Single ticket: €0.60 (valid 70 minutes)

🕒 Operating hours: Mon–Sun: 06:00–24:00
(it may change until September)

🚆 Train frequency: Every ~3.5 minutes

Line 1 Stations (West → East)

New Railway Station ▶ Dimokratias ▶

Venizelou ▶ Agia Sofia ▶ Sintrivani ▶

Panepistimio ▶ Papafi ▶ Efklidi ▶ Fleming ▶

Analipsi ▶ 25 Martiou ▶ Voulgari ▶ Nea Elvetia

Pro tip: Over 300,000 archaeological artifacts were found during construction! Stations like Venizelou and Agia Sofia display Byzantine finds, so the metro works also as a museum!

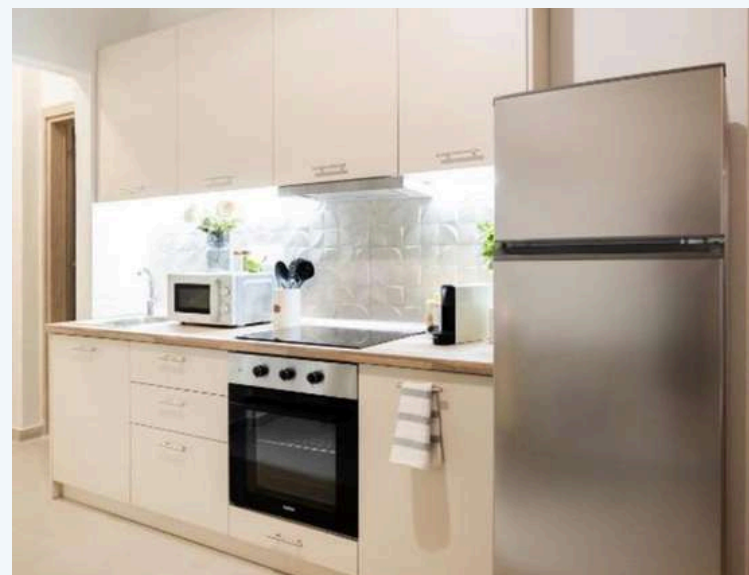
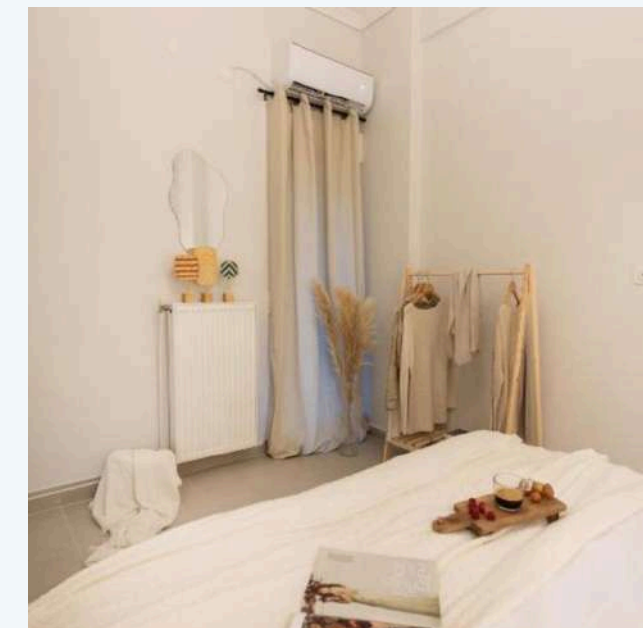
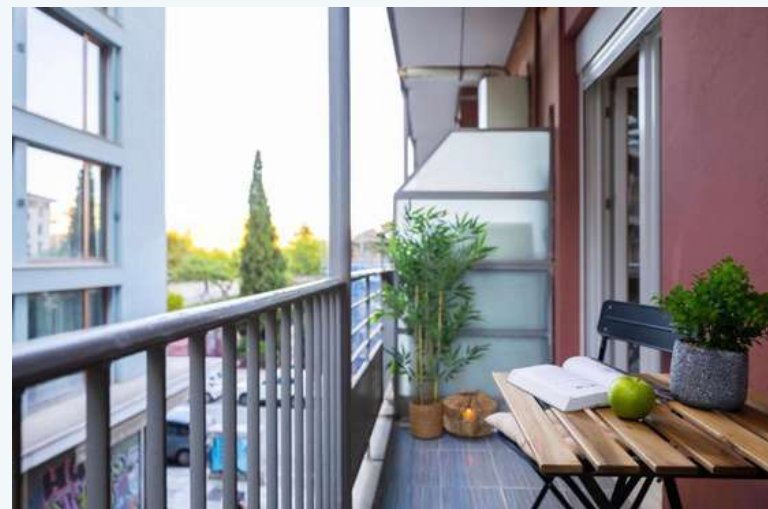


Accommodation

All Lithuanian participants will share a house in the city center of Thessaloniki from 15/09 to 19/09

The house will have 3 rooms with double bedrooms

<https://www.booking.com/hotel/gr/cozy-aprttment-in-thesloniki-thessaloniki.en-gb.html>



THINGS TO DO:

Sightseeing in the Heart of Thessaloniki:

- Walk or rent a bike from the **Nea Paralia waterfront**, seaside promenade to the **Old Port** past the iconic **White Tower**.
- Stroll around the **Aristotelous Square**, explore the **Roman Forum** and the **Arch of Galerius (Kamara)** nearby.
- Visit **Ladadika or Valaoritou** at the evening, the charming old district of colourful streets, great food and vibes.
- Head to **Tsimiski Street** for a modern shopping spree, or explore the
- boutique shops in the **Navarinou & Proxenou Koromila** streets for local designs.
- **Optional Day Trip in Halkidiki** (60–90 min from Thessaloniki): the three «prongs» of Halkidiki, some of Greece's most stunning beaches.
- Take a bus from KTEL Chalkidiki station.

Key Facts:



Population

~1 million (metro area)



Climate

Warm Mediterranean climate (22–30°C in September)



Currency:

Euro (€)



Language:

Greek (English widely spoken in the centre)



Time Zone:

EET (UTC+2) / EEST (UTC+3 in summer)

WHERE TO EAT:

Our favourite spots in Thessaloniki—from street food to local tavernas

BOUGATSA OR KOULOURI THESSALONIKIS

Breakfast choices, both best from a local bakery (fournos).

 **From Bougatsa Giannis, Paradiasiako, or any neighbourhoodournos.**

FREDDO ESPRESSO

Greece's signature iced coffee — a double espresso blended until frothy and served over ice.

 **Available everywhere, try it at Bunny Tail, or Join the Juice Bar.**

SOUVLAKI OR PITA GYRO / FALAFEL AS A VEGAN/VEGETARIAN OPTION

The ultimate Greek street food with grilled meat.

TIROKAFTERI

A whipped feta and roasted chilli dip, a Thessaloniki staple.

 **On the menu at every ouzeri — Lola, Kyra Sofi, Salumeria and most tavernas.**

TRADITIONAL LOCAL DISHES – MEZEDES

 Best found at traditional tavernas and home-cooking restaurants like tsinari (Ano Poli), Kyra Sofi

TRIGONA PANORAMATOS AS A DESERT FROM ELINIDIS

 Elinidis Pastry Shop, Panorama neighbourhood (~15 min from the centre by taxi).

CONTACT US!



Project Coordinator in Lithuania

Austeja Amankaviciute
austejai@tavo-europa.eu

Join with Tavo Europa

Explorer Pass 2026. You are welcome to join our new educational programme for 2026!

Dive into non-formal learning exploration for a 75 euro fee that will unlock your potential to join all training courses, professional study visits, events in Lithuania and abroad until the end of the year, and also supports us to find new exciting and exclusive opportunities for community members!

Please do not pay any fee until you receive a confirmation letter to join the programme. If you want to join the project, please fill the application form, whether you have already participated or not.

Bear in mind that Tavo Europa keeps the right to send the most suitable and motivated participants to all of our projects.

For more projects:

Explore the world and learn together with the help of Tavo Europa.

Join the group with more opportunities:

<https://www.facebook.com/groups/186132221744993>



**ENJOY YOUR TIME IN
THESSALONIKI!**

