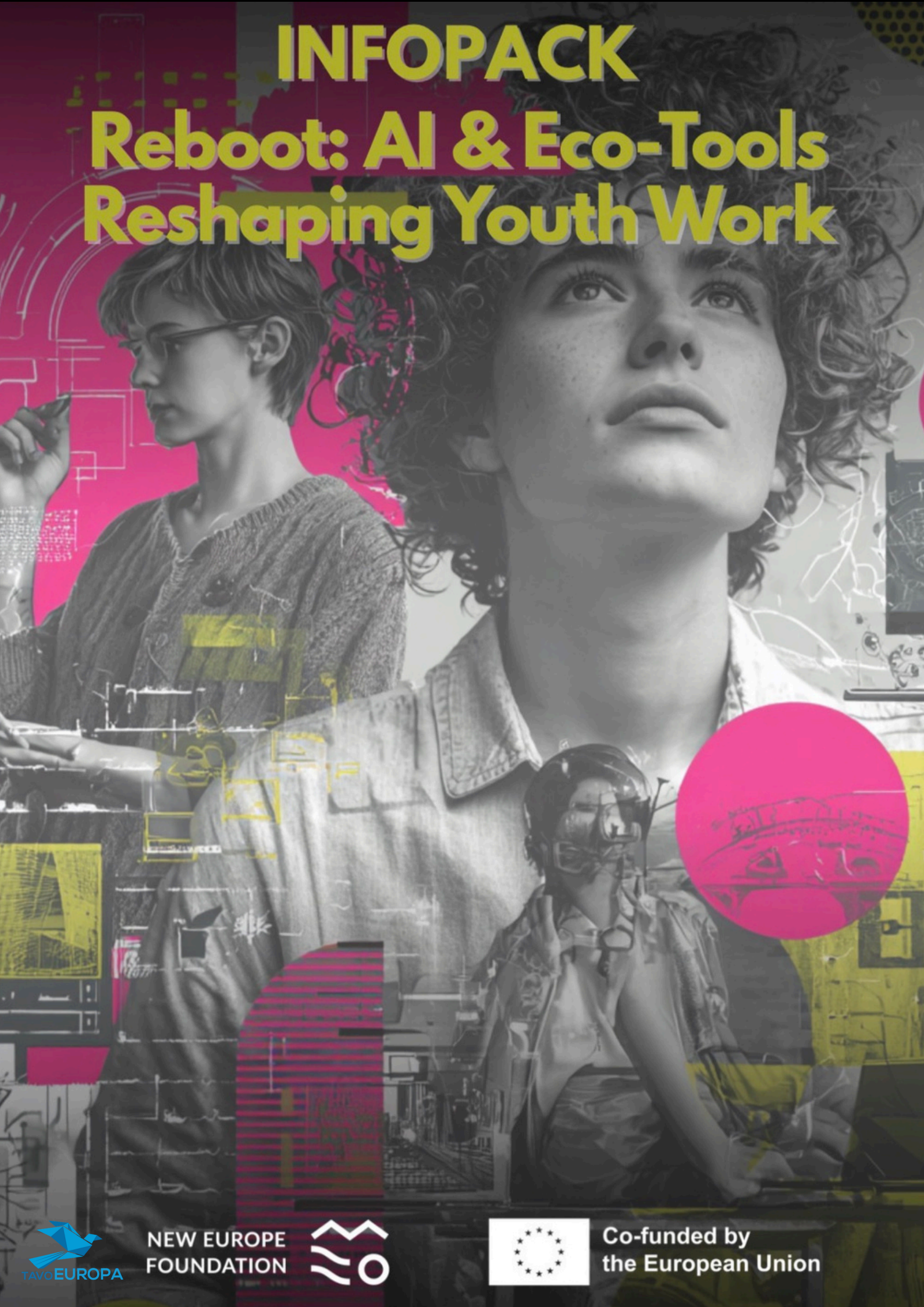


INFOPACK

Reboot: AI & Eco-Tools Reshaping Youth Work



NEW EUROPE
FOUNDATION



Co-funded by
the European Union

OVERVIEW

Join the international Erasmus+ training course “Reboot: AI & Eco-Tools Reshaping Youth Work” organised by the New Europe Foundation (NEF). In an international group of youth workers, trainers and educators from 6 EU countries, you will explore how artificial intelligence and ecological tools can refresh and strengthen everyday youth work practice. The programme is built around three rotating thematic labs: AI & Evaluation Lab, where you will use tools such as ChatGPT and Claude for programme planning, material creation, presentations, surveys and data analysis; Green Audit & Gamification Lab, focused on CO2 calculators, eco-checklists, green logistics planning and gamified ecological education; and Content Creation Lab, where you will work with Canva, CapCut and podcast tools to create engaging eco-content. The course ends with an Individual Action Plan including at least 3 tools to implement in your organisation, a collaboratively created open resource repository, and a Youthpass certificate.

OBJECTIVES

Explore how AI tools can support planning, evaluation and content creation in youth work.

Develop practical methods for ecological education through green audit tools and gamification.

Create an individual action plan and practical resources to implement new tools in your organisation.

SCHEDULE

ARRIVAL DAY: 13.07.2026

DATES OF THE TRAINING COURSE:

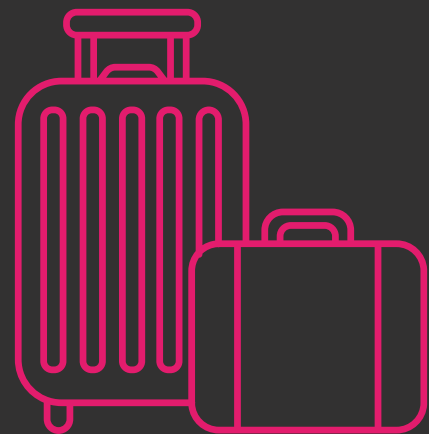
14.07.2026 -20.07.2026

DEPARTURE DAY: 21.07.2026

TRAVEL BUDGET

(distances in the straight line)

Distance	Travel using ecological means of transport	Travel without using eco-friendly means of transport
10–99 km	56 EUR	28 EUR
100–499 km	285 EUR	211 EUR
500–1999 km	417 EUR	309 EUR
2 000–2 999 km	535 EUR	395 EUR
3000–3999 km	785 EUR	580 EUR
4000–7999 km	1 188 EUR	1 188 EUR
8000 KM or more:	1 735 EUR	1 735 EUR



We use only the Erasmus+ Distance Calculator to measure how many kilometers your refund is based on. Type your home as the starting place and Międzybrodzie Bialskie, Poland (the exchange location) as the destination. The number the calculator shows is the number of kilometers we use.

Example:

1. Open the Erasmus+ [Distance Calculator](#)
2. From: Your town/city (e.g., “Cluj-Napoca, Romania”).
3. To: Międzybrodzie Bialskie, Poland.
4. If the tool shows 467 km, then your refund distance is 467 km.

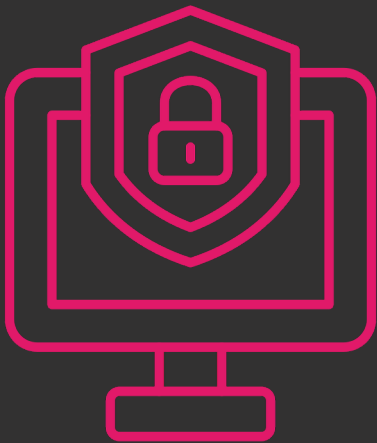
What happens next? Check the Refund Table. Find the distance range that includes your number. If your distance fits in that range, you get the refund shown in that row.

Example:

1. The calculator shows 467 km.
2. In the Refund Table, the range 100–499 km = €211
3. Because 467 is inside 100–499 km, your travel refund is €211

WHAT TO BRING?

- **Passport or ID card**
- All travel **TICKETS!**
- Towels and personal hygienic things (shampoo, soap, toothbrush etc.)
- Hair dryer - the venue does not provide such
- Your positive attitude and willingness to participate in activities



OTHER PRACTICALITIES

- During the youth exchange we will organize a cultural evening. Bring with your traditional snacks and drinks, some games for the evening. Bring necessary ingredients with you, the venue cannot provide it.
- In the centre there is Wi-Fi Internet connection so you can bring your computer.
- During the project you will be provided with 3 meals (breakfast, lunch, and dinner), also 2 coffee breaks a day.

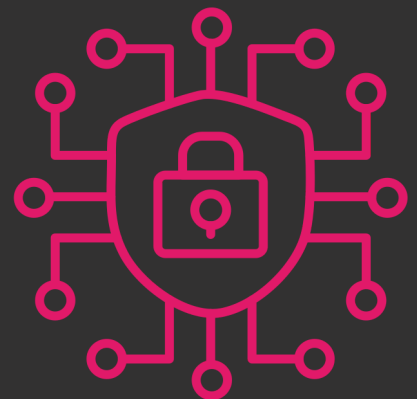
TRAVEL EXPENSES

1. Travel expenses will only be reimbursed upon presentation of documents proving the amount actually paid: original invoice. Documents must include the date, price, traveler's name, destinations, and the receipt must be completely clear.

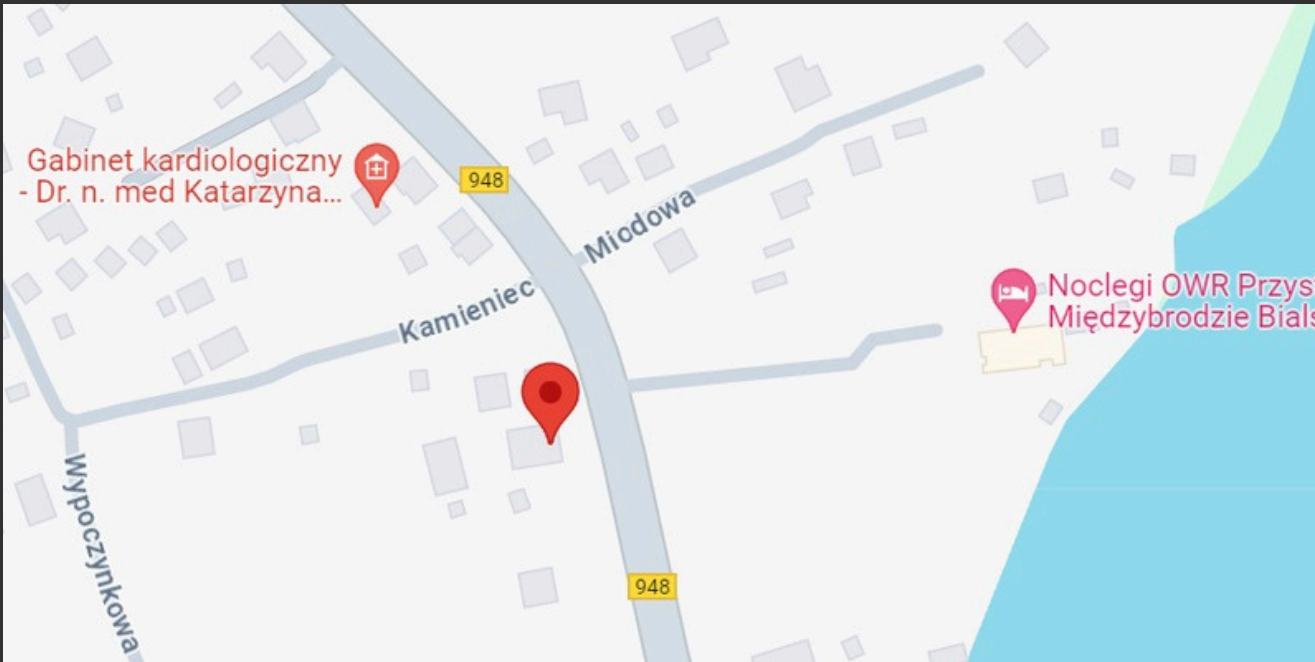
2. Keep all travel documents that you will receive during your trip: boarding passes, receipts, tickets, etc. as we absolutely need them!

3. Taxi rides are **not refundable**.

4. **Travel expenses can be reimbursement during the exchange or after.**



HOW TO GET HERE?



Ósrodek Społeczny, ul. Żywiecka 67, Międzybrodzie Bialskie,
Silesian Voivodeship, Poland, 34-312

IF YOU ARE LANDING IN KATOWICE

Katowice Airport → AP bus → **Katowice Dworzec** (railway station)

Katowice Dworzec → train → **Bielsko-Biała Główna** (railway station)

Bielsko-Biała D.a bus station → 113 bus (6:05, 6:35, 8:40, 9:45, 10:30, 14:00, 14:40, 15:40, 16:40, 18:20, 19:20, 21:20, 22:30)

Międzybrodzie Skrzyżowanie (20 stops)

Międzybrodzie Skrzyżowanie - few minutes on foot → **YOU ARE THERE!**



IF YOU ARE LANDING IN KRAKOW

Kraków Airport (Kraków Lotnisko) → SKA1 train (6 stops, every half an hour, after 6 pm every hour) → **Kraków Główny** (Main railway station)

Kraków Główny → train → **Bielsko Biała Główna** (railway station) (Direct trains: 06:06, 10:41, 13:50, 14:41, 16:35, 18:43)

Bielsko-Biała D.a bus station → 113 bus (6:05, 6:35, 8:40, 9:45, 10:30, 14:00, 14:40, 15:40, 16:40, 18:20, 19:20, 21:20, 22:30) → **Międzybrodzie Skrzyżowanie** (20 stops)

Międzybrodzie Skrzyżowanie - few minutes on foot → **YOU ARE THERE!**

OR LONGER OPTION

Kraków Airport (Kraków Lotnisko) → SKA1 train (6 stops, every half an hour, after 6 pm every hour) → **Kraków Główny** (Main railway station)

Kraków Główny → train → **Katowice Dworzec** (railway station)

Katowice Dworzec → train → **Bielsko Biała Główna**

Bielsko-Biała D.a bus station → 113 (6:05, 6:35, 8:40, 9:45, 10:30, 14:00, 14:40, 15:40, 16:40, 18:20, 19:20, 21:20, 22:30) →

Międzybrodzie

Skrzyżowanie (20 stops)

Międzybrodzie Skrzyżowanie → few minutes on foot → **YOU ARE THERE!**

USEFUL LINKS

[INTERCITY](#)

[KOLEJE ŚLĄSKIE](#)

[ECOLINES](#)

[FLIXBUS](#)

[LUXEPRESS](#)



Travelling by Van!

Perhaps you have more questions about the trip. Please read this section carefully and feel free to contact us if you need any clarifications.

Participants will travel by the organization's vehicle.

The trip will begin on the **13/07/2026 from Lithuania**. You are expected to arrive the same day. The trip back will be organized in the same way. We expect you to be back in Lithuania by the **21/07/2026** in the second part of the day/night.

Participants will be driving the vehicle during the whole trip.

You will need to pay for diesel and road taxes during the trip.

These expenses will be reimbursed after you return home and present all original invoices.

Before departure, all participants must sign the rules for using the vehicle.

Each invoice must include the following organization details:

Tavo Europa

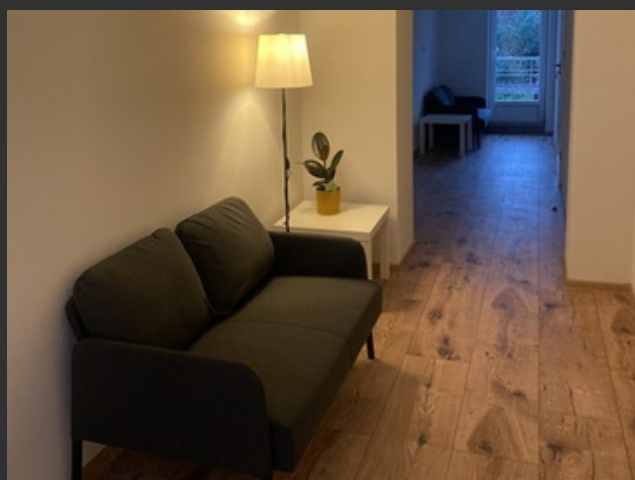
Mozuriskiu g. 17-8

LT-06298 Vilnius

Registration Code: 304638334



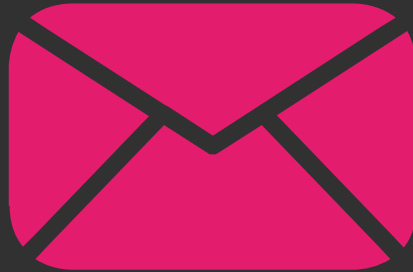
ACCOMMODATION



The accommodation provided is at the Spółecznik Center located in the picturesque Żywiec County, in the midst of the Silesian Beskid Mountains and in the vicinity of the Żywiec Lake.

All costs related to accommodation and meals are covered by the organizer. Reimbursement of travel expenses will be made by bank transfer, using the prevailing exchange rate and issued in euros (€). In addition, no fees will be charged for participation in the conference.

CONTACT US!



Project Coordinator in Lithuania

Austeja Amankaviciute

austejai@tavo-europa.eu

NEW EUROPE
FOUNDATION



Co-funded by
the European Union

Funded by the European Union. Views and opinions expressed are however those of the author(s) only and do not necessarily reflect those of the European Union or the European Education and Culture Executive Agency (EACEA). Neither the European Union nor EACEA can be held responsible for them.

Join with Tavo Europa

Explorer Pass 2026. You are welcome to join our new educational programme for 2026!

Dive into non-formal learning exploration for a 75 euro fee that will unlock your potential to join all training courses, professional study visits, events in Lithuania

and abroad until the end of the year, and also supports us to find new exciting and exclusive opportunities for community members!

Please do not pay any fee until you receive a confirmation letter to join the programme. If you want to join the project, please fill the application form, whether you have already participated or not.

Bear in mind that Tavo Europa keeps the right to send the most suitable and motivated participants to all of our projects.

For more projects:

Explore the world and learn together with the help of Tavo Europa.

Join the group with more opportunities:

<https://www.facebook.com/groups/186132221744993>

NEW EUROPE
FOUNDATION



Co-funded by
the European Union

Funded by the European Union. Views and opinions expressed are however those of the author(s) only and do not necessarily reflect those of the European Union or the European Education and Culture Executive Agency (EACEA). Neither the European Union nor EACEA can be held responsible for them.